

2023

# Wylfe Valley ART + Trail

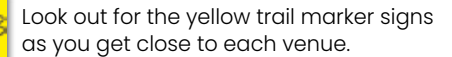
Sat 29 April - Mon 8 May

73 VENUES  
240+ ARTISTS  
EXHIBITIONS  
OPEN STUDIOS  
GALLERIES  
WORKSHOPS

**FREE ART TRAIL GUIDE**

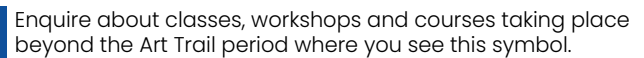
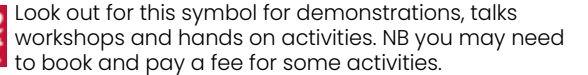
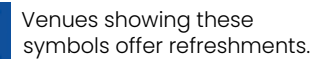
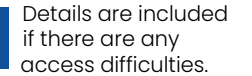
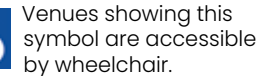


**Following the Trail** This map gives an approximate location for each venue. All listings in this guide have directions from a main road. There is also a [///what3words](#) location code for each venue, find out more and download the app at [www.what3words.com](http://www.what3words.com).



**Buying Art** Much of the art is for sale and many artists and craftspeople will work to commission. However, not all of the venues take credit cards, so if you're planning to purchase, be prepared to pay by BACS, or bring a cheque book or cash.

If you'd like to follow the trail by bike, much of it coincides with, or is close to, the Wiltshire Cycleway. Details at [www.sustrans.org.uk/find-other-routes/wiltshire-cycleway](http://www.sustrans.org.uk/find-other-routes/wiltshire-cycleway).



[www.wvat.co.uk](http://www.wvat.co.uk) Everything in this guide is also on the Wylfe Valley Art Trail website. Find a QR code on the back of this guide. You can follow links through to our social media pages for updates and lots more images.



**Disclaimer** All information in this guide is correct at time of printing and is based on details provided by each venue. The organisers of the Wyllye Valley Art Trail, participating venues and artists cannot accept liability for any loss, damage or injury sustained by any member of the public while visiting any venue. The public do so entirely at their own risk.



Images on the back cover (from top):

Lindsay Keir (venue 3)  
Yve Sturgeon (venue 11b)  
Cath Bloomfield (venue 50)  
Emma Mauger (venue 33)  
Anna McDowell (venue 22)



1

## Gray's Stone Carving Studio

An exciting display of stone and metal sculptures and carvings, some of which will be for sale, by members of this long-established group. Carving workshops available.

Angus Mann – Stone carving / sculpture  
Dean Harris – Stone carving / sculpture  
Henry Gray – Stone carving / sculpture  
MC Hamilton – Stone carving / sculpture  
Moira Ross – Stone carving / sculpture  
Peter Hughes – Stone carving / sculpture  
Roger Braddick – Stone carving / sculpture  
Susan Trigger – Stone carving / sculpture  
Tamsin Gray – Stone carving / sculpture  
Rich Twisted Arc – Metal sculpture

T: 07766 464048

[www.grays-stone-carving.co.uk](http://www.grays-stone-carving.co.uk)

[facebook.com/graysstonecarvingstudio](https://facebook.com/graysstonecarvingstudio)

[instagram.com/graysstonecarvingstudio](https://instagram.com/graysstonecarvingstudio)


Gray's Stone Carving Studio, Knowle Farm,  
Bowerchalke. SP5 5BP

Continue on Church St until you see a large  
green garage door, turn into the drive and  
immediately left, park in front of studios.

///motion.amounting.heeding

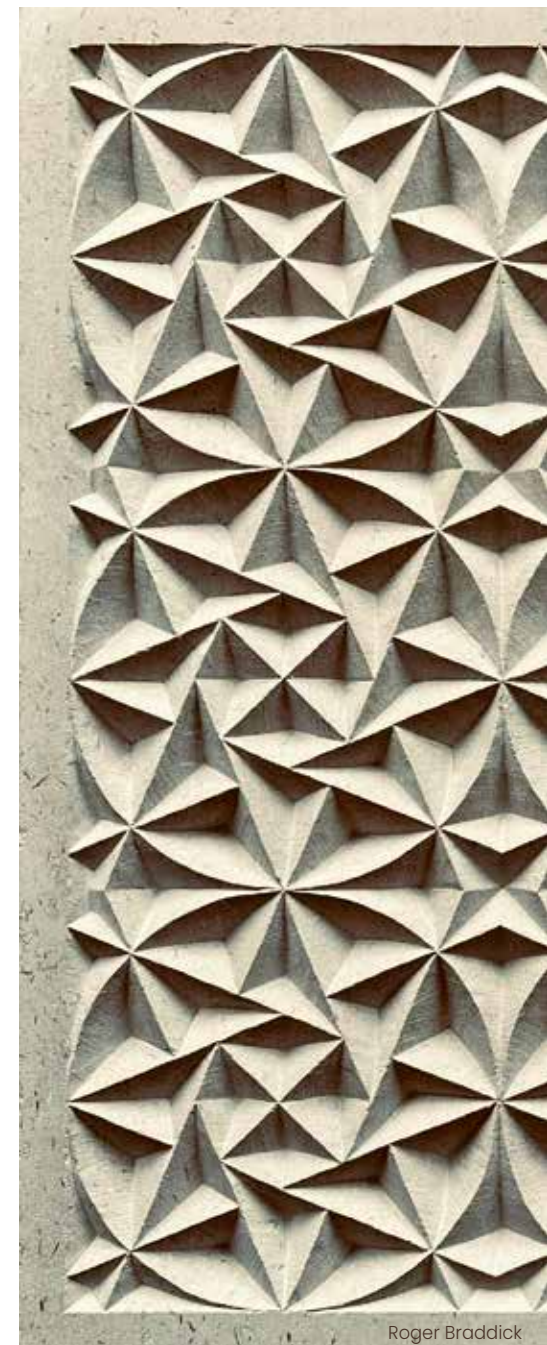
**take pArt** Have-a-go carving classes Sat 29 Apr.  
1 – 3pm / Mon 1 May: 10 – 12am / Sat 6  
May: 1 – 3pm / Mon 8 May: 10 – 12am.  
£10/hr. Book via GSCS website.

Talk and letter cutting demonstration  
Sun 30 Apr / Sun 7 May: 2 – 3pm

 Stone carving classes and tuition. Visit  
[www.grays-stone-carving.co.uk/](http://www.grays-stone-carving.co.uk/)  
stone-carving-courses



**OPENING VARIATIONS:** Open daily from  
10.30am – 5pm. Closed Tues 2 + Weds 3 May



Roger Braddick



We are hugely proud that, in early 2022, Queen Elizabeth II approved the QAVS National Assessment Committee's recommendation that the volunteers of The Wyllye Valley Art Trail should receive the prestigious **Queen's Award for Voluntary Service (QAVS)**. It was one of the final awards made by Her Majesty Queen Elizabeth before she died.

This is a fabulous honour and reflects profoundly on everyone involved with WVAT over the past 22 years, from the organising teams through to the participants.

## Royal Presentation

To express our gratitude for the QAVS Award and as Wyllye Valley Art Trail 2023 coincides with the coronation of King Charles III on 6 May, the WVAT artists and makers have been assembling a 'treasure box' containing examples of their work to be presented to the King. More details at [wvat.co.uk](http://wvat.co.uk) where there will also be a video of the 'Royal treasure box'.

## The Wyllye Valley Young Artist Award

In 2022 the **Arts Society Wyllye Valley (ASWV)** generously offered to award sponsorship to a selected young artist from south west Wiltshire to stage an exhibition of their work during the 2023 **Wyllye Valley Art Trail**, offering support, encouragement and much needed exposure at the early stages of their creative career.

We are pleased to announce that the winner of the **Wyllye Valley Young Artist Award** is **Arabella Chapman (right)**, a painter and recent graduate of the University of the Arts, London who is showing her paintings at **King's Orchard, Teffont Magna (Venue 2)**.

The **Arts Society Wyllye Valley** was founded in 1978 to stimulate interest and increase the knowledge of a wide field of fine and decorative arts subjects. Discover more at [www.theartssocietywyllyevalley.org.uk](http://www.theartssocietywyllyevalley.org.uk)








Rose Eva



Arabella Chapman

2

## Arabella Chapman Painting

Winner of the 2022 Arts Society  
Wylve Valley Young Artists Award 

**Divine Bodies:** a collection of abstract and  
figurative works on canvas and paper.

T: 07447 918144

E: bella.chapman156@gmail.com

instagram.com/arabellachapmanart

## Rose Eva

Sculpture / painting / drawing

**Divine Bodies:** an exhibition of 3-D and 2-D  
works, including garden sculpture, centred on  
the human form.

T: 07884 432135

www.rose-eva.com

facebook.com/roseevasculpture

instagram.com/roseevasculpture

King's Orchard, Teffont Magna, Salisbury. SP3 5QP

Turn onto drive apron next to phone box in  
middle of village on B3089. Drive immediately  
splits; follow lower, narrow drive right to top.

///crystal.minimums.partly



**OPENING VARIATIONS:** Closed during  
Coronation Service on Sat 6 May



Plaxy Arthur



Lindsay Keir

3

## Meadow View Artists

A colourful and eclectic exhibition of art and  
craft from a wide variety of disciplines.

Meadow View, Teffont Magna, Salisbury. SP3 5QP

B3089 Salisbury - Hindon road. Turn at Village  
Hall and continue 200m past Church.

///chairing.opponent.rescue



2 steps down



Lunches / cakes

**OPENING VARIATIONS:** After midday on Sun 7  
May, no access from B3089 due to Coronation  
street party. Access only from the A303.

## Plaxy Arthur Ceramics

Plaxy uses soft blues and greens for her  
stoneware ceramics. She makes utility pieces  
on the wheel, and one off hand built sculptural  
pieces.

T: 07740 873687

www.plaxypots.com

## Lindsay Keir Painting

Paintings which draw inspiration from the  
natural world, using a variety of oil and water  
based media often with highlights of gold.

T: 07974 798044

www.lindsaykeir.co.uk

instagram.com/lindsaykeirart

## Gillian McCormick Stained Glass

Display of wildlife themed painted, fired and  
fused glass.

T: 01725 517206

instagram.com/gillianmccormick\_glass

E: gm.glassart@hotmail.co.uk



Meadow View Artists  
continues overleaf...





3 continued...

### Rachel Raine Jewellery

Patterns and textures inspired by nature. Silver, hammered, melted, cast and polished to reflect light. Beautiful stones enhance the unique designs.

T: 07989 962199

E: [rachelraine@hotmail.co.uk](mailto:rachelraine@hotmail.co.uk)  
[instagram.com/rachelaainesilver](https://www.instagram.com/rachelaainesilver)

### Yvonne Steer Ceramic sculpture

Figures sculpted from life or from imagination. The clay pieces are fired to a high temperature and can be placed indoors or outside.

T: 07788 660127

E: [yvonnesteer@yahoo.co.uk](mailto:yvonnesteer@yahoo.co.uk)

### Will Richardson Sculpture

Stone sculpture strongly influenced by the economy of Eastern arts, exploring the beauty of nature and organic form.

T: 07769 308778

E: [willr7946@me.com](mailto:willr7946@me.com)  
[instagram.com/willrichardson79](https://www.instagram.com/willrichardson79)



Yvonne Steer



Will Richardson

## Chilmark / Fonthill Bishop



4

### Martyn Simpson Furniture

A collection of hand-made, contemporary wall cabinets and other furniture, inspired by brutalist design, made from sustainably sourced European Oak.

T: 07764 761263

[www.martynsimpson.work/#/furniture](http://www.martynsimpson.work/#/furniture)  
[instagram.com/martynsimpson](https://www.instagram.com/martynsimpson)

Unit 1, Field Barn Buildings, Ridge Farm,  
Chilmark. SP3 5AD

On B3089, between Chilmark and Fonthill  
Bishop, at crossroads take turning to Ridge  
Farm Field Buildings. Go to end of track,  
studio on right. [///soak.alarming.burglars](http://soak.alarming.burglars)



Cakes and  
biscuits

5

### Studio 90

You are welcomed once more to an exhibition of  
our new works including wistful watercolours,  
clever collage, perfect pots and beautiful boats.

Julia Haes – Painting / drawing

Mark Muspratt-Williams – Painting

Alan Booth – Ceramics

Su Cuff – Photocollage

Sue Vezey – Painting /drawing

T: 07854 883424

The Reading Room, Fonthill Bishop. SP3 5SH

The Fonthill Reading Room is situated east  
of Hindon on the B3089. Ample parking.

[///surfer.sculpting.elite](http://surfer.sculpting.elite)



Mark Muspratt- Williams





## 6 Matthew Burt Furniture

Meet the makers in action creating furniture from beautiful British timbers.

T: 01747 820800

[www.matthewburt.com](http://www.matthewburt.com)

[instagram.com/matthewburtstudio](https://www.instagram.com/matthewburtstudio)

Lime Tree Studio and Workshops,  
Wylie Road, Hindon. SP3 6ER



We are just off B3089 on Fonthill Bishop side of Hindon on narrow road to A303. Field parking. [///craftsmen.ditching.bottom](http://craftsmen.ditching.bottom)

**take pArt** Matthew gives a free personal tour of the workshops daily 11.30am. Maximum 6 people per tour. Book in advance only.

**Why do we make?** Julie Ayton, Matthew Burt & Ruth Dresman in conversation: Weds 3 May 6.30pm Tickets £10 to include a glass of wine. Proceeds to Hindon Community Stores. To book for either event ring 01747 820511.



Matthew Burt



Ali Holloway

## Wink Gallery Contemporary Textiles

A curated survey of contemporary fibre art, showcasing woven work and paper yarn.

Catarina Riccabona

Ali Holloway

Jane Ponsford

T: 01747 820800 | [www.winkgallery.co.uk](http://www.winkgallery.co.uk)

[instagram.com/thewinkgallery](https://www.instagram.com/thewinkgallery)



Workshops on Saturdays



Catarina Riccabona



## 7 Matthew Burt Furniture Showroom

### Julie Ayton Ceramics

Distinctive tableware and unique display pieces show off strong forms and classic glazes, some individually decorated with nature-inspired themes.

T: 07717 854861

[www.julieayton.com](http://www.julieayton.com)

[facebook.com/julieaytonpotter](https://www.facebook.com/julieaytonpotter)

[instagram.com/julie\\_ayton](https://www.instagram.com/julie_ayton)



Ceramics



Matthew Burt

## Matthew Burt Furniture

Imaginative and beautifully crafted furniture and accessories. Designed, made and sold in Hindon.

T: 01747 820511

[www.matthewburt.com](http://www.matthewburt.com)

[instagram.com/matthewburtstudio](https://www.instagram.com/matthewburtstudio)

## Ruth Dresman Glass

Coloured glass carved with natural images.

T: 07904 207642

[www.ruthdresmanglass.com](http://www.ruthdresmanglass.com)

[facebook.com/ruthdresmanglass](https://www.facebook.com/ruthdresmanglass)

[instagram.com/stories/ruthdresman](https://www.instagram.com/stories/ruthdresman)



I teach courses in sandblasting glass and Graal technique at The Glass Hub, Trowbridge. [www.theglasshub.com](http://www.theglasshub.com)

Matthew Burt Furniture Showroom, High St, Hindon. SP3 6DR

In the centre of Hindon opposite the Lamb Inn and across the road from the Grosvenor Arms. On-street parking. [///fruits.ditched.exotic](http://fruits.ditched.exotic)



Two steps down from front door







8

## Johnny Morant Painting

A new body of work inspired by the Old Masters.

T: 07887 480643

[www.johnnymorant.com](http://www.johnnymorant.com)

[instagram.com/johnnymorant](https://www.instagram.com/johnnymorant)

Red Lion House, High St, Hindon. SP3 6DP

3 doors down from the Lamb Inn.  
The studio is located beyond the house, along the gravel driveway.  
Please park on the High Street.  
///puzzled.charmingly.professes



There is a step up  
into the studio



Moira Ladd

10

## The Creative Chameleons

Hindon Village Hall, High Street, Hindon. SP3 6ED

From the crossroads at the top of Hindon, follow the High Street downhill. The Village Hall is at the bottom.  
///brightens.sampled.carbon



## Jason Fermor Wood

Wood turning and resin work. Useful and decorative items using locally sourced and reclaimed wood.

T: 07967 599481

[facebook.com/jasonfermor](https://www.facebook.com/jasonfermor)

[instagram.com/jasonfermor](https://www.instagram.com/jasonfermor)

## Moira Ladd Painting

Bold, acrylic paintings inspired by the local woodlands and hedgerows. Also limited edition prints and greetings cards.

T: 07974 596785

[www.moiraladd.blogspot.com](http://www.moiraladd.blogspot.com)

[facebook.com/moiraladdimages](https://www.facebook.com/moiraladdimages)

[instagram.com/moiraladdimages](https://www.instagram.com/moiraladdimages)

## Roz Legge Textiles

An array of items created using both wet felting and needle felting, birds, animals, fashion accessories and home decor.

T: 07734 314219

[orchardfelts@gmail.com](mailto:orchardfelts@gmail.com)

[facebook.com/orchardfelts](https://www.facebook.com/orchardfelts)

[instagram.com/orchardfelts](https://www.instagram.com/orchardfelts)



## Claire Waters Fused Glass

Unique, handmade glass pieces set into wood surrounds and wood bases, garden pieces with glass inserts, glass hangings and glass decorations.

T: 07738 162791

[www.etsy.com/ClaireWatersGlass](https://www.etsy.com/ClaireWatersGlass)

[instagram.com/claire\\_waters\\_glass](https://www.instagram.com/claire_waters_glass)

9

## Fern Cottage Art Group

A diverse collection of inspired paintings, drawings, illustration, sculpture, cards and upcycled art, by this established Hindon art group.

**Greg Bastin** – Sculpture / fine drawing

**Meghan Hill** – Illustration

**Sally Hughes** – Acrylic / upcycled art

**Jo Jon** – Shared canvas work / mixed media

**Tanya Lole** – Bird and animal portraits, acrylic and oil

T: 01747 820700

E: [hughessal@btinternet.com](mailto:hughessal@btinternet.com)

Fern Cottage, High Street, Hindon. SP3 6DP

Fern Cottage is situated in the High Street, halfway downhill on the left. Parking on road.

///bearable.brightly.rich



narrow corridor within  
exhibition space



+ home made cake



Tanya Lole







Robert O'Rorke



Helen Thorp

11  
A

### Robert O'Rorke Painting

Landscapes, interiors and still lifes painted in England, Scotland, Italy and Greece in oil, gouache and watercolour.  
T: 01747 820808  
E: [robert@robertororke.com](mailto:robert@robertororke.com)

### Helen Thorp Painting

Paintings, mostly in oil, concentrating on landscapes and plants, both in my garden and abroad.  
T: 07715 642622  
[www.helenthorp.co.uk](http://www.helenthorp.co.uk)

Lower Lawn Barns, Fonthill Gifford. SP3 6SG

On Hindon to Tisbury road, take turning next to the Beckford Arms. After half a mile, turn left to Clementine's Shop.

///[nature.craftsmen.supported](http://nature.craftsmen.supported)



Uneven ground

11  
B

### Lower Lawn Barns Group

A friendly group showing a variety of skills from painting to ceramics, silver jewellery to sculpture and photography.

Lower Lawn Barns, Fonthill Gifford.  
SP3 6SG

Directions as for IIA



### Jenny de Sausmarez Painting

A mixture of seascapes, landscapes and still life.  
T: 07761 876239  
[www.jennydesausmarez.com](http://www.jennydesausmarez.com)



Jenny de Sausmarez



Julie Byngam

### Julie Byngam Painted furniture

Painted trays, boxes, decorations and cards in a folk art style.  
T: 01258 456285  
E: [juliebyngam@gmail.com](mailto:juliebyngam@gmail.com)

### Matt Belfrage Furniture

A selection of bespoke furniture, cabinets and giftware.

T: 07974 332829  
[www.mattbelfrage.co.uk](http://www.mattbelfrage.co.uk)



Matt Belfrage

Lower Lawn Barns Group continues overleaf...



### Jane Alyson Smart Paintings / drawings

Illustrated maps, paintings in oil of still lives and natural subjects. Prints of drawings available.

T: 07890 635254

[www.janealysonsmart.co.uk](http://www.janealysonsmart.co.uk)



### Ann Oldfield

Jeweller / silversmith

Silver jewellery, spoons and boxes.

T: 07496 337416

[www.annoldfield.co.uk](http://www.annoldfield.co.uk)



Ann Oldfield

### Lynn Keddie

Painting

A collection of expressive, intuitive paintings revealing the essence of nature and my feelings about our world.

T: 07792 148275 | [www.lynnkieddie.com](http://www.lynnkieddie.com)

[facebook.com/Lynnkieddieart](https://facebook.com/Lynnkieddieart)

[twitter.com/Lynnkieddie](https://twitter.com/Lynnkieddie)

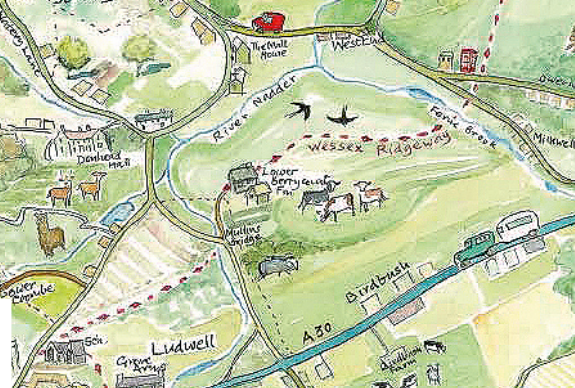
[instagram.com/lynnkieddiepaintings](https://instagram.com/lynnkieddiepaintings)



'Paint What You Feel' – expressive painting in acrylics



Lynn Keddie



Rupert Williamson

## Fonthill Gifford



Yve Sturgeon

### Yve Sturgeon

Painting / sculpture

Clay sculpture and Totem Orbs (a tool for meditation).

T: 01747 830110

[www.yvesturgeon.co.uk](http://www.yvesturgeon.co.uk)

### Rupert Williamson

Furniture / photography

One-off pieces of furniture made in wood. Photographs of flowers and landscape montages.

T: 07800 944752

[www.rupertdesigns.co.uk](http://www.rupertdesigns.co.uk)

[instagram.com/rupertdesigns](https://instagram.com/rupertdesigns)

### Ursula Waechter

Ceramics

Tin-glazed earthenware for use and decoration made on the potter's wheel and hand-decorated with brushes using oxide mixtures.

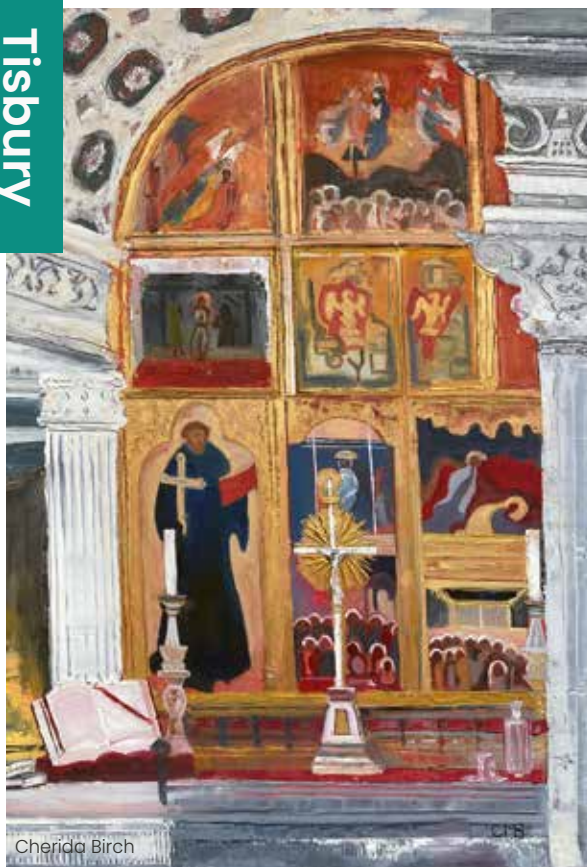
T: 07748 082087

[www.ursulawaechter.com](http://www.ursulawaechter.com)

[instagram.com/uwaechterceramics](https://instagram.com/uwaechterceramics)







Cherida Birch

12

### Cherida Birch Painting

A collection of oil paintings exploring spirituality and aesthetic beauty in European urban architecture and British landscape.

T: 07739 093230

[www.cheridabirch.com](http://www.cheridabirch.com)

[www.facebook.com/cheridadaniel3](https://www.facebook.com/cheridadaniel3)

[www.instagram.com/cheridabirchart](https://www.instagram.com/cheridabirchart)

Bliss Cottage, Hindon Lane,  
Tisbury. SP3 6QQ

On Hindon Lane, half a mile from  
Tisbury. Parking in layby, also by  
hedge on Hindon Lane. The studio  
is at the back of Bliss Cottage.

///convert.quits.mirror



Steps up to  
studio in garden

C.B.

13

### Christopher Edwick Painting

**Portraits of the Sensual World.** Oil and  
watercolour paintings in search of a  
language beyond simple observation,  
to convey the rich sensuality of nature.

T: 01747 228960

[www.chrisedwick.com](http://www.chrisedwick.com)

[instagram.com/chrisedwick](https://www.instagram.com/chrisedwick)

Acorn Cottage, Hatch Lane, Tuckingmill,  
Tisbury. SP3 6JF

From Tisbury High Street take Vicarage  
Road, behind Benett Arms. Past  
Oddford Brook, follow Hatch Lane uphill  
300 yds. Acorn Cottage is on the right.

///create.euphoric.whips



Exhibition is on 2 floors. Ground  
floor has wheelchair accessibility  
but not upper floor



Christopher Edwick

15

### Kate Good Pottery Pottery / sculpture

Working pottery and  
showroom. A varied  
range of stoneware,  
cookware and table-  
ware in natural colours.  
All oven, dishwasher and  
microwave safe.

T: 01747 870367

Kate Good Pottery,  
High St, Tisbury. SP3 6HD

Located half way up the High  
Street next to The Deli. Best to  
park in 'The Avenue' car park.

///pointed.expel.fabric

OPENING VARIATIONS:

Closed for lunch

1 – 2pm daily



14

### Elizabeth M Coyle-Camp Mixed media

**What is that in the garbage?** Abstract art  
for home interiors and an interactive and  
experiential installation to explore.

T: 07768 604567

E: [liz@emc2publicrelations.com](mailto:liz@emc2publicrelations.com)

[instagram.com/emc2artist](https://www.instagram.com/emc2artist)

Monmouth Hill House, Monmouth Road (aka  
Union Road), Tisbury SP3 6NL

Just above mini-roundabout, going up hill on  
right. Entrance at weeping willow tree, short  
drive with red-doored garage and friendly  
dog. ///masks.incurring.glue



take  
pArt

Relaxed  
interactivity

OPENING VARIATIONS: Closed Sat 6 & Sun 7 May



Elizabeth M Coyle-Camp







## 16 Ladytree Designs Jewellery

Ladytree's recently renovated studio and gallery is home to ethical jewellery, pottery and fossils made by mother/daughter team Hannah and Ela Good.

T: 07403 231752 | [Hello@ladytreedesigns.com](mailto:Hello@ladytreedesigns.com)  
[www.ladytreedesigns.com](http://www.ladytreedesigns.com)  
[facebook.com/ladytreedesigns](https://facebook.com/ladytreedesigns)  
[instagram.com/ladytreedesigns](https://instagram.com/ladytreedesigns)

Ladytree Designs, Rear of Alton House,  
 Beckett St, Tisbury. SP3 6HB

Located in Beckett St (between Kate Good Pottery and The Deli) half way up Tisbury High Street. [///economics.buck.keys](http://economics.buck.keys)



Jewellery  
 and pottery

OPENING VARIATIONS:

Closed for lunch 1 – 2pm daily



## 18

### Furzelease Farm

A group of artists exhibiting in a traditional stone barn and farmyard setting.

Furzelease Farm, Tisbury Row, Tisbury. SP3 6RZ  
 T: 01747 870509

From Tisbury High Street go past the station and under bridge. Tisbury Row is first turning on left (1 mile). Venue 300 yards on left. Park in yard. [///maker.ripen.emporium](http://maker.ripen.emporium)



Short distance of gravel to barn.  
 2 wide steps to outside exhibits



+ cake (at weekends)

## 17 Secret Wardour

**Secret Wardour returns!** An eclectic mix of paintings, drawings, ceramics and sculpture by established artists, parents and children.

Pene Cairns – Sculpture  
 Anna Cecil – Painting  
 Henrietta Charteris – Painting  
 Melissa Curry – Mixed Media  
 Laura Dalton – Painting  
 Hannah Fowler – Painting  
 Nick Gorman – Painting  
 Skye Holland – Painting  
 Amy Shuckburgh – Painting  
 Pre-Loved Art – Mixed Media  
 Wardour School Children – Mixed Media

T: 07876 560924

[facebook.com/secretwardour](https://facebook.com/secretwardour)  
[instagram.com/secretwardour](https://instagram.com/secretwardour)

Quarry Farm,  
 Upper Chicksgrove. SP3 6LY

Turn left past Quarry Farmhouse & continue to the courtyard to park. Exhibition in one of the Barns. [///pays.posed.brightens](http://pays.posed.brightens)



Plein air painting sessions at Quarry Farm during the Art Trail. Check social media (above) for day + times.

OPENING VARIATIONS: 29 Apr– 1 May & 7, 8 May 10am–5pm / 2 – 5 May 10am–3pm / 6 May closed

## Robert Baker Woodwork

Tables and seats in an informal style using local native hardwoods. Turning wood to explore the internal complexities of fallen trees.

T: 07970 494506

[www.northcottagecreations.com](http://www.northcottagecreations.com)

[facebook.com/northcottagecreations](https://facebook.com/northcottagecreations)

search 'North Cottage Crafts'

## Serena Barnes Jewellery

Sterling silver jewellery created using recycled silver.

[www.chaingang-online.co.uk](http://www.chaingang-online.co.uk)

[instagram.com/chain\\_gang\\_jewellery](https://instagram.com/chain_gang_jewellery)



## Jacqueline Baker Ceramics

Work Inspired by the marvellous joy and beauty of my surroundings, celebrating nature, down to the smallest insect, through our dark days.

T: 07970 494506

[www.northcottagecreations.com](http://www.northcottagecreations.com)



Furzelease Farm  
 continues overleaf...



**Gerry Blundell**  
Painting

Local views- watercolours.  
T: 01747 870509  
E: gblundell22@gmail.com



Gerry Blundell

**Susan Poulton**  
Painting / drawing / printmaking

Work reflecting a love of horses and the countryside as well as an interest in contemporary art and different media.  
T: 07899 744764  
E: jackdaw@orpheusmail.co.uk



Susan Poulton

**Ursula Madeleine Buston**  
Painting / print

A selection of abstract paintings and prints reflecting Ursula's passion for colour.  
T: 07341 141267  
twitter.com/ursulabuston  
E: ursulabuston@hotmail.com



Ursula Madeleine Buston



**Geraldine McLoughlin**  
Glass sculpture

An Innovative collection of sculptures made of glass, stone and recycled slate and wood, for internal and external display, influenced by earth patterns, astrology and conservation.  
T: 07772 101084  
www.geraldinemcloughlin.glass

**Patricia Low**  
Painting / printmaking / ceramics

Selection of works on paper, etchings, silkscreen and lino prints: portraits, landscapes and interiors.  
T: 07587 243872  
www.patricialowceramics.co.uk  
instagram.com/patricialowceramics



Patricia Low

**Anna Mabella Edgley**  
Painting

Abstract geometric and landscape paintings in watercolour, gouache, pastel and acrylic.  
T: 07946 896333  
www.amestudio.co.uk  
instagram.com/annamabellae\_studio



Anna Mabella Edgley





## Amy Lancaster Sculpture

Life size animal sculptures using discarded farm machinery, agriculture byones and everyday garden tools.

T: 07747 630626 | [www.metalmenagerie.co.uk](http://www.metalmenagerie.co.uk)

## Penelope Daw Painting

A collection of acrylic, oil & mixed media paintings inspired by plein air landscapes and flora & fauna.

T: 07766 663195 | E: [pennydaw3@gmail.com](mailto:pennydaw3@gmail.com)



Penelope Daw



## Jonty Sale Photography

Open studio and darkroom, showing landscape, flora and still life.

T: 07975 763928  
[www.jontysale.com](http://www.jontysale.com)

Highwood Lodge,  
29 Nightingale Lane,  
Old Wardour. SP3 6RR

Highwood Lodge is ½ mile  
from Old Wardour Castle, on  
the way to or from Tisbury  
/// [bills.jolt.thinnest](http://bills.jolt.thinnest)



## Hatch Farm Artists

A diverse range of work in a Primitive Methodist Chapel. Includes installation, paintings, sculpture and mixed media.

David Allfrey – Painting  
Emma Cowley – Painting  
Sadie Flower – Drawing  
Sandie Flower – Installation  
Ernest Lee – Painting / drawing  
Keith Musgrove – Sculpture / drawing  
Frances Prosser – Painting  
June Ridgway – Sculpture  
Lynne Savege – Drawing  
Frank Snook – Sculpture

T: 07738 735634

The Chapel, East Hatch, Tisbury. SP3 6PH

From Tisbury take Vicarage or Monmouth Rd and follow Hatch lane then follow WVAT signage. Parking: Farm Yard entry on left and signposted /// [innovator.threading.highs](http://innovator.threading.highs)



Approx 1 mins walk uphill  
back from Chapel



Fruit  
drinks

## 19 Rebecca Rymer Swallow Arts

Glass art / lino prints / woodcarving

A new technique for traditional leaded windows and mirrors using natural forms. Lino prints of buildings. Greetings cards. Hand-carved house signs.

T: 07811 755650

E: [bexrymer@gmail.com](mailto:bexrymer@gmail.com)

[facebook.com/BexRymer](https://facebook.com/BexRymer)

[facebook.com](https://facebook.com). Search:

'stained glass rebecca rymer'

[instagram.com/bextarplett](https://instagram.com/bextarplett)

[instagram.com/swallowlinoprints](https://instagram.com/swallowlinoprints)

Vine Cottage, Swallowcliffe. SP3 5NX

Take second turning into  
Swallowcliffe off the A30 (coming  
from east or west). Second thatch  
cottage on the right,  
parking signposted.

/// [names.change.cocoons](http://names.change.cocoons)



Emma Cowley





22

Anna McDowell

## Anna McDowell

### Textiles

Vintage and ethically sourced textiles and yarns influence my work, adding texture and colour. My work ranges from textile jewellery to large wall art pieces.

T: 07432 604982

[www.henrysbuttons.co.uk](http://www.henrysbuttons.co.uk)

[facebook.com/DorsetButtonsHB](https://facebook.com/DorsetButtonsHB)

[instagram.com/dorsetbuttons](https://instagram.com/dorsetbuttons)



Demonstrations of the techniques of making Dorset Buttons, a heritage craft, using contemporary materials.



The heritage art of Dorset Buttons

## Pauline Dawkins

### Sculpture

Life- size animals and natural forms made from locally sourced upcycled chicken wire capturing movement and form.

T: 07792 199431

E: [paulinedawkinswhite@icloud.com](mailto:paulinedawkinswhite@icloud.com)

## Sarah Flux

### Painting

Time stands still when I endeavour to capture in acrylic the changing moods of the landscape. I am delighted to be exhibiting in the stunning Donhead St Andrew Church

T: 07748 415486 | E: [influxart@btinternet.com](mailto:influxart@btinternet.com)



Laurence Pollard

## Laurence Pollard

### Painting

Laurence's paintings are inspired by the landscapes of Dorset and of her native France, and their unique atmosphere is captured in vibrant colours.

T: 07814 752131 | E: [laurencepollard3@gmail.com](mailto:laurencepollard3@gmail.com)

## Lynda Appleby

### Painting

A range of work from delicate, emotive watercolours to dynamic, powerful paintings in acrylic and oil that fully capture the essence of their subject.

T: 07855 179935 | [www.lyndaappleby.com](http://www.lyndaappleby.com)

## Joanne Rutter

### Ceramics

Having retired from teaching ceramics, now back in the studio. On show will be hand-modelled work, including fruits, thrown mugs and larger vessels.

T: 07849 383879 | E: [rutter.joanne@sky.com](mailto:rutter.joanne@sky.com)



## Julia Desch MSDC

### Textiles

An exciting collaboration with the Salon Group of Artists has inspired new work in wensleydale fibre art, poetry and collectible designer items.

T: 07810 047071 | [www.juliadesch.com](http://www.juliadesch.com)

[facebook.com/JuliaDeschArtist](https://facebook.com/JuliaDeschArtist)

[instagram.com/juliadesch1121](https://instagram.com/juliadesch1121)



Informal and free drop-in demonstrations in felt and wool techniques.

## The Salon Group of Artists

A highly talented diverse collaboration of artists producing textiles, ceramics, painting and sculpture. This group is a 'must see'.

Donhead Community Space, Donhead St Andrew Church, St Bartholomew Street, Donhead St Andrew. SP7 9EB

From A30, Sands Lane, continue approx 1½ miles to Donhead St Andrew. Left at T junction, first turning on right after pub. Church is 200m on right. [overture.whizzing.wildfire](http://overture.whizzing.wildfire)



OPENING VARIATIONS: Closed Sat 6 May for the Coronation



Sarah Flux



Joanne Rutter



Lynda Appleby



23

## Michael Dillon Painting

A miscellany of mural designs, sketches and easel paintings displayed in the artist's studio.  
T: 07708 281279  
[www.dillonmurals.com](http://www.dillonmurals.com)  
[instagram.com/michaeldillonmuralpainter](https://www.instagram.com/michaeldillonmuralpainter)

*'Musters', Semley SP7 9AP*

*From A350, take road to Semley. Opposite Village Hall, just before railway bridge, fork left up dead-end lane. Fork left again through blue gates*

*///prepped.approach.girder*



24

## Rachel Sargent Painting / printmaking

**Walking Distance.** A celebration of nature, footpaths and getting lost. An emotional response to where I walk. Paintings, linocuts and etchings.

T: 07957 452853  
[www.rachelsargent.co.uk](http://www.rachelsargent.co.uk)  
[instagram.com/rachelsargent51](https://www.instagram.com/rachelsargent51)

*Semley Village Hall, Semley, Shaftesbury SP7 9AP*

*Between A350 and Semley, the village Hall is just west of the railway bridge. ///needed.mingles.grapes*



*Printmaking and mixed media painting*

**OPENING VARIATIONS:** Open daily from 11am – 5pm. Closed Mon 8 May



25

## David Carpenter Painting

A collection of oil paintings, with themes including Wiltshire countryside, cityscapes and still life.

T: 07867 505190

[www.davidcarpenterart.co.uk](http://www.davidcarpenterart.co.uk)

[instagram.com/davidcarpenterart](https://www.instagram.com/davidcarpenterart)

## Ali Russell Painting

A collection of abstract oil paintings, inspired by the mystical scenery in both the Wiltshire and Dorset landscapes.

T: 07380 900233

[www.alirussellart.com](http://www.alirussellart.com)

[instagram.com/alirussell\\_art](https://www.instagram.com/alirussell_art)

## Vivien Stratton Painting / ceramics

A collection of abstract oil paintings and ceramics – all of which are inspired by the shapes and texture of the countryside around me.

T: 07768 448522

[instagram.com/vivienstrattonart](https://www.instagram.com/vivienstrattonart)

*Compton McRae, Unit 2, Chaldicott Barns, Semley. SP7 9AW*

*Exit the A350 towards Semley. Compton McRae is situated on the left-hand side about half a mile towards the village. There is ample parking. ///equipping.issues.paintings*



*The gallery is on the first floor above the cafe via stairs. Unfortunately no lift access*



*Delicious lunches, coffee and pastries available all day in the deli / cafe*

**OPENING VARIATIONS:**

Open 9.30am – 4pm each day.

Closed Sun 7 + Mon 8 May







Anthony Connolly



Anthony Connolly (President of The Royal Society of Portrait Painters) organises painting workshops at Summerleaze through the year with a selection of well known tutors. See details at [www.josephinec.co.uk](http://www.josephinec.co.uk)

26

## Summerleaze Gallery

**A True Prospect.** Six exceptional figurative artists exhibiting landscapes, still life paintings and sculptures including paintings from 2 Royal Tours.

**Chloe Cardozo** – Paintings

**Anthony Connolly** – Still life and portrait in oil

**Mark Coreth** – Sculpture

**Tom Hoar** – Landscape in oil and watercolour

**Paul MacDermot** – Landscape and nature paintings

**Lucy Portman** – Landscape in oil

**Tim Scott Bolton** – Landscape in oil and watercolour

For the first time Tim Scott Bolton's paintings from 2 Royal Tours to Europe and The Middle East will be shown to commemorate the Coronation.

T: 01747 830480

[www.summerleazegallery.co.uk](http://www.summerleazegallery.co.uk)

Summerleaze Gallery, Millbrook Lane, East Knoyle. SP3 6BY

From A350 East Knoyle bypass turn west on Millbrook Lane signed West Tisbury. 1 mile on left. [///moon.tango.face](http://moon.tango.face)



27

## Ian Hamilton

Ironwork

An inspiring range of hand forged ironwork, in an organic free flowing style.

T: 07870 155775 | E: [valleyforge.ek@gmail.com](mailto:valleyforge.ek@gmail.com)

Valley Forge, The Street, East Knoyle. SP3 6AJ

From A350 take turning to East Knoyle, Valley Forge is situated on the main street [///wider.joints.stages](http://wider.joints.stages)



## Katy Crabbe

Painting

Vibrant and textured oil paintings capturing the essence of floral landscapes.

T: 07565 508884

[www.katycrabbeart.weebly.com](http://www.katycrabbeart.weebly.com)

[facebook.com/katycrabbeart](https://facebook.com/katycrabbeart)  
[instagram.com/katycrabbeart](https://instagram.com/katycrabbeart)



1 step



Tim Scott Bolton

28

## Val Morsman

Painting

Colourful works and fanciful quirks – oil, watercolour and mixed media

T: 01747 830030

[www.valmorsman.com](http://www.valmorsman.com)

Chauffeur's Cottage, Hindon Road, East Knoyle. SP3 6AA

Take north turning to East Knoyle off A350, into Hindon Rd (marked as 'Church Rd' on some apps).

Studio is approx 100yds on right.

Parking on road.

[///bearings.parkland.foam](http://bearings.parkland.foam)



Workshops and one-to-one watercolour tuition





## 29 Catherine Beale Painting

Radiant watercolour landscapes previewed from Catherine's new book, family portrait commissions and Bath Watercolour Workshops. Member of Society of Women Artists (SWA).

T: 07891 409490

[www.catherinebeale.com](http://www.catherinebeale.com)

[facebook.com/catherinebealeart](https://facebook.com/catherinebealeart)

[instagram.com/catherinebealeart](https://instagram.com/catherinebealeart)

The Stables, Valley Farm House, Milton, East Knoyle. SP3 6BG

From A350 take turning to Milton and Upton. At T junction turn left, the stables are three doors up on the right marked with bunting.

///glance.newly.powerful



Gravel drive. One step up to narrow doorway



**Painting on the Lawn** Fri 5 May.

1- 4pm. Paint 'en plein air' in a beautiful garden. Catherine will explain her watercolour techniques from her new book. £40 incl. materials. All abilities.

Bookings: [www.catherinebeale.com/bath-watercolour-workshops-2](http://www.catherinebeale.com/bath-watercolour-workshops-2)



Wet-in-wet watercolour landscapes, portraits & figures from life. Line & wash subjects. Plein air sessions in Bath & beyond.

OPENING VARIATIONS: Closed Sat 29 April – Wed 3 May



Christianna Mitchell

## 30 Christianna Mitchell Painting / mixed media

Imaginary Places: Paintings using layers of oil paint combined with collage and mono prints.

T: 07967 477132

[www.christiannamarionmitchell.co.uk](http://www.christiannamarionmitchell.co.uk)

[instagram.com/christiannamitchell](https://instagram.com/christiannamitchell)

Upton Coombe, Upton, East Knoyle. SP3 6BW

My studio is in the hamlet of Upton, about half a mile north of The Fox & Hounds pub, on Wise Lane, which runs between the B3089 and East Knoyle Village.

///fields.swordfish.double



OPENING VARIATIONS: Open 29 April – 1 May  
11am – 5pm / Closed 2 – 8 May

31

## Sue Phipps Painting

Landscape paintings, mostly in oil, of the Wiltshire and Brittany countryside. Also life drawings in pastel.

T: 07771 767196

[www.suehipps.com](http://www.suehipps.com)

[facebook.com/sue.phipps](https://facebook.com/sue.phipps)

[instagram.com/suehipps56](https://instagram.com/suehipps56)

## Christopher Topham Painting

Recent paintings inspired in particular by the woodland landscape around Stourhead, but also from African journeys.

T: 07503 106552

E: [cmetopham@hotmail.com](mailto:cmetopham@hotmail.com)

[instagram.com/christophertopham](https://instagram.com/christophertopham)

## Alexandra Davies Painting

Collection of life, still – life and landscape painting.

T: 07768 885668

E: [alex@theparishhouse.co.uk](mailto:alex@theparishhouse.co.uk)

[instagram.com/theparishhousegarden](https://instagram.com/theparishhousegarden)

Burton Grange, Burton, Mere. BA12 6BR

Take turning to Burton off A303 just east of Mere bypass. Go for 700 yds. Entry is on right after wall. Or 10 min walk from Mere along Ashfield Water.

///closes.part.standards



One step to venue door but we have a wheelchair ramp



Alexandra Davies



Sue Phipps



Christopher Topham



Laura Rich



32

## Laura Rich Painting / drawing

Contemporary landscape paintings and intricate charcoal drawings of my 'collections' from nature.

T: 07910 736563

[www.laurarichart.co.uk](http://www.laurarichart.co.uk)

[facebook.com/laurarichartist](https://facebook.com/laurarichartist)

[instagram.com/laurarichpainter](https://instagram.com/laurarichpainter)

## Evie Rich Drawing

A collection of drawings from nature and life.

T: 07910 736563

E: [ekrich02@icloud.com](mailto:ekrich02@icloud.com)

[instagram.com/evierich.art](https://instagram.com/evierich.art)

The Stable, The Beeches,  
Chetcombe Road, Mere. BA12 6AX



From A303 westbound, take first exit to Mere which is Chetcombe Rd. From Mere centre, go northeast on White Rd + turn right just before A303 bridge. [///amazed.sailed.masterpiece](http://amazed.sailed.masterpiece)

OPENING VARIATIONS: Open daily until 4pm



33

## Dorset Uglies (Emma Mauger) Ceramic sculpture

One-off, quirky ceramic creatures. Come and see a range of characters, from dogs, cats and foxes to warthogs...and the odd grotesque!

T: 07760 431009

[www.dorset-uglies.com](http://www.dorset-uglies.com)

[facebook.com/dorsetuglies](https://facebook.com/dorsetuglies)

[instagram.com/dorsetuglies](https://instagram.com/dorsetuglies)

Holt, Water St, Mere. BA12 6DY

Free car park in Salisbury Street, just round the corner from the venue. Turn right out of car park then right again into Water Street

[///popping.treaties.songbird](http://popping.treaties.songbird)



Slight slope up to double doors



Emma Mauger

34

## Mark Dunham Sculpture

A unique exhibition of sculptural clocks & other works of lamps in wood, metal and glass, each of local functional way, showing the beauty of materials in a creative,

T: 07852 724512

[www.mrdunham.uk](http://www.mrdunham.uk)

[facebook.com/mark.dunham.90857](https://facebook.com/mark.dunham.90857)

[instagram.com/markdunhamdesign](https://instagram.com/markdunhamdesign)

Holkham Cottage, Salisbury Street, Mere. BA12 6HF

Holkham Cottage is situated opposite Salisbury Street car park, where parking is free, or park outside the door.

[///reheat.handlebar.dissolve](http://reheat.handlebar.dissolve)



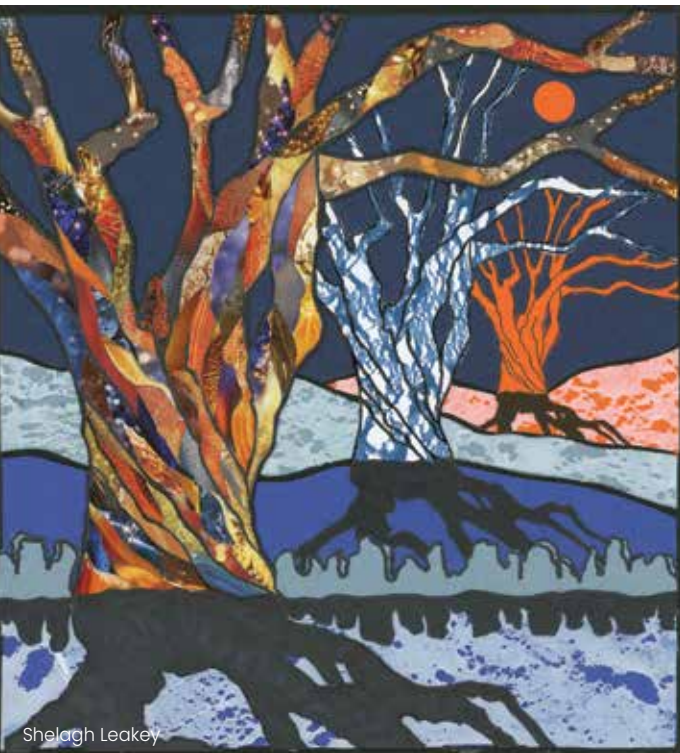
Small step at front door, max door width 740mm



Designing and making, primarily with wood







35

### Shelagh Leakey

Painting / mixed media

An eclectic mix of mixed media artwork, including collage and traditional watercolour by Shelagh – a former BBC Set designer, graduate of Kingston College of Art.

T: 07769 697943  
E: shelaghleakey@aol.com

### Henrietta De Ritter

Painting

Watercolours with particular emphasis on the science of palette selection. A trained illustrator, graduate of both Chelsea, and The City & Guilds of London colleges of Art.

T: 07949 216185  
E: henriettaderitter@hotmail.co.uk  
instagram.com/henriettaderitterartist



Watercolour painting



36

### Steve Hawkins

Photography

**Sodium and Stream.** Images from the long-form project: 'The Wylde' and the launch of his first Photobook: 'Sodium' with a collection of local images.

T: 07752 715288 | [www.focalthingy.com](http://www.focalthingy.com)  
[twitter.com/focalthingy](https://twitter.com/focalthingy)  
[instagram.com/focal\\_thingy](https://www.instagram.com/focal_thingy)

The Butt Of Sherry, Castle Street, Mere. BA12 6JE

On the B3092, 100m west of the clock tower in Mere square. The Butt of Sherry is opposite free car park. [paintings.eyeful.solutions](http://paintings.eyeful.solutions)



Back entrance through gate to the right of the building



One step into the main entrance with additional steps inside



Lunches



**take pArt** Photowalk around Mere Mon 1 May. 1 – 4pm, followed by drinks and, between 4 – 5pm, a presentation of **Sodium**: the transition from the old streetlights to the newer LED white lights and how it's changed the nightscape of Mere forever



The Studio and The Greenhouse Studio, Lordsmead House, Edgebridge, Mere. BA12 6DB

From the centre of Mere, take Boar Street past Post Office, drive 600 yards, turn right by cream thatched cottage, 150 yards up lane on left. Park in drive.

[oven.across.treetop](http://oven.across.treetop)



Gravel path – no steps. The Greenhouse Studio is unsuitable for wheelchairs.

OPENING VARIATIONS: Closed Sat 6 May (Coronation Day)



If you are enjoying the Wylde Valley Art Trail, you might like to visit these

other exciting open studio events and art trails happening nearby in 2023:

North Somerset Arts Week	28 April – 8 May	<a href="http://www.northsomersetarts.org">www.northsomersetarts.org</a>
Bath Open Studios	Weekend dates May – Oct	<a href="http://www.bathopenstudios.co.uk">www.bathopenstudios.co.uk</a>
Marlborough Open Studios	July weekends	<a href="http://www.marlboroughopenstudios.co.uk">www.marlboroughopenstudios.co.uk</a>
Hampshire Open Studios	19 – 28 Aug	<a href="http://www.hampshireopenstudios.org.uk">www.hampshireopenstudios.org.uk</a>
Blackmore Vale Art Trail	9 – 17 Sept	<a href="https://www.instagram.com/blackmorevalearttrail">www.instagram.com/blackmorevalearttrail</a>
Somerset Open Studios	16 Sept – 1 Oct	<a href="http://www.somersetartworks.org.uk">www.somersetartworks.org.uk</a>
Flying Monk Arts Trail (Malmesbury)	24 – 25 Sept	<a href="http://www.flyingmonkarttrail.co.uk">www.flyingmonkarttrail.co.uk</a>
Peacock Arts Trail (North West Wilts)	7–15 Oct	<a href="http://www.peacockartstrail.co.uk">www.peacockartstrail.co.uk</a>



### 37 Madeleine Cardozo Photography / ceramics

An exhibition of 'The Mere 100' portraits. And other interesting photography. Hand thrown ceramics from the Mad Potter.  
T: 07826 924786  
[www.madeleinecardozo.co.uk](http://www.madeleinecardozo.co.uk)  
[facebook.com/photographybymadeleinecardozo](https://facebook.com/photographybymadeleinecardozo)  
[instagram.com/madeleinecardozo.photography](https://instagram.com/madeleinecardozo.photography)

### Tessa Farrington Painting / mixed media

An exciting collection of watercolours with pen and ink. Floral, still life subjects plus local landscapes and seascapes.  
T: 07776 260319  
E: [tessa.farrington@virgin.net](mailto:tessa.farrington@virgin.net)  
[instagram.com/tessa.farrington](https://instagram.com/tessa.farrington)

Mapperton Hill Farm, Gillingham Road, Mere. BA12 6LH

On the B3092, between Gillingham and Mere. Opposite Three Oaks camp site  
///shack.pounces.zebra

Madeleine Cardozo



### 38 Pamela Coward Painting / collage

Recent work in oil, acrylic or collage inspired by the Wiltshire landscape, focusing on pattern and colour in a semi abstract style.  
T: 07974 938103  
E: [oxleaze.farm@btinternet.com](mailto:oxleaze.farm@btinternet.com)

The Hill Brush Company,  
Norwood Park, Mere. BA12 6FE

Hill Brush company is on B3095 at the west end of Mere between the town centre & A303 Mere bypass. ///marketing.outdone.pencil



Pamela Coward



Jennifer Stokes

### 40 Barb Ralph Painting

A varied collection of animal and countryside paintings in different media, plus prints and cards.

T: 07771 502158 | E: [barb4art@gmail.com](mailto:barb4art@gmail.com)

The Stable, White Cross, Zeals. BA12 6PH

From New Road, Zeals, turn up Chapel Lane for 1 mile. Venue is on the right in White Cross. Park on verge outside  
///starlight.admire.resonated

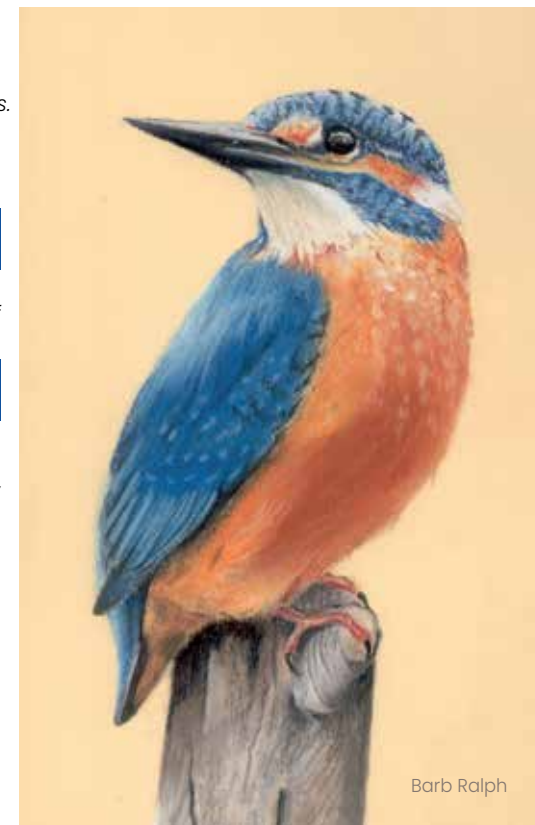
OPENING VARIATIONS: Open until 4.30pm daily & 5.00pm at weekends. Other times by prior arrangement



Homemade cakes, in aid of Air Ambulance



One step up in one doorway



Barb Ralph

### 39 Bound by Stitch

An exhibition presenting a wide range of textile techniques, both traditional and contemporary. Art in a fresh form that will surprise and delight. New members welcome to the group.

Angela Ambrose – Machine embroidery and mixed media.

Jane Hayward – Contemporary textiles.

Jennifer Stokes – Contemporary & traditional textiles.

Rosemary Westlake – 3D hand & machine embroidery.

T: 01747 840236 | E: [quercusquilts@btinternet.com](mailto:quercusquilts@btinternet.com)  
[www.facebook.com search: 'bound by stitch'](https://www.facebook.com/search/?q=bound+by+stitch)

Vectis House, New Road, Zeals. BA12 6NA

Studio is on junction of New Road & Fantley Lane. Please use parking area in New Road. Do not park in Lane or on junction. ///prices.walled.brightens



Ongoing demonstrations of various techniques



2 shallow steps to front door







41

### Lyndi d'Ambrumenil Painting

Inspiration for my oil painting, mixed media and photographs is taken from a love of The Fells, Cumbria and water.  
T: 07773 504237  
E: lyndi\_dambrumenil@hotmail.com  
[www.instagram.com/lyndidambart](http://www.instagram.com/lyndidambart)

### Philippa Hicks Painting

A collection of recent paintings inspired by my travels and life in the South West.  
T: 07773 504237  
[www.philippahicksart.com](http://www.philippahicksart.com)  
[facebook.com/philippahicksart](https://facebook.com/philippahicksart)  
[instagram.com/philippahicksart](https://instagram.com/philippahicksart)



### Karen Prin Textiles

Original hand-stitched textile art inspired by nature and landscapes.  
T: 07749 623924  
E: karenprin777@gmail.com  
[instagram.com/karenprin777](https://instagram.com/karenprin777)



Karen Prin

Zeals Green House, Zeals. BA12 6NH

With the Bell & Crown pub on your left, proceed along main road. Take first left at village green. Follow signs to venue. Parking available on site. [galleries.ghostprepares](http://galleries.ghostprepares)



Path across lawn from car park. Two steps down to entrance of exhibition through narrow gate



Homemade cakes available in aid of friends of St Martin's church, Zeals. Loo available

OPENING VARIATIONS: Closed Sat 6 May



42

### Eliza Parker Painting

A selection of small and affordable oil paintings of still life and landscapes.  
T: 01747 840010  
[www.elizaparkerart.com](http://www.elizaparkerart.com)  
[instagram.com/elizaparker\\_art](https://instagram.com/elizaparker_art)

Stourvale Cottage, Zeals Row, Zeals. BA12 6PE

Follow Art Trail signs on Chapel Lane, Zeals to Harcourt Farm (park in field). The Studio is next door, with entry sign on gates [///decoded.sprinkle.audible](http://decoded.sprinkle.audible)

#### OPENING VARIATIONS:

Closed Tue 2, Wed 3, Thu 4 May except by appointment. Call or text 07970 678751

43

### Bella Hoare Painting

A selection of dramatic work in oil paint, focusing on the female form and portrait.  
T: 07812 555883 | [www.bellahoare.com](http://www.bellahoare.com) | The Studio, Gasper Cottage, Stourton. BA12 6PY

Follow brown signs to Stourhead from A303 or B3092. Go through village. After 1 mile turn right to Gasper. 2nd turning on the right. Studio behind house. [///smooth.flips.resaping](http://smooth.flips.resaping)



Several steps and narrow paths

OPENING VARIATIONS: Closed Tue 2, Wed 3, Thu 4 May



Bella Hoare





Debora Barnes



Susanna Lisle

45

**Susanna Lisle**  
 Painting / drawing

Pattern seeking: work inspired by the garden and landscape explores how organic form plays together with the geometry of the Eastern world.

T: 01985 844806

[www.susannalisle.com](http://www.susannalisle.com)

[instagram.com/susannalisle](https://www.instagram.com/susannalisle)

41-42 Church Street, Maiden Bradley. BA12 7HW

The venue is on the main road behind the red telephone box; on the right coming from Frome, on the left arriving from Mere

///repayment.kings.cuddled



4 steps to the garden  
and 2 steps to the studio

44

**Debora Barnes**  
 Photography

Love for nature and outdoor living transformed into images. A photography exhibition inspired by the English countryside and woodlands.

T: 07934 877792 | [www.deborabarnes.co.uk](http://www.deborabarnes.co.uk)  
[instagram.com/debbarnesphotography](https://www.instagram.com/debbarnesphotography)

The Old Chapel, Church Street, Maiden Bradley. BA12 7HW

T: 07470 868306 | [instagram.com/theoldchapelmaidenbradley](https://www.instagram.com/theoldchapelmaidenbradley)

Take B3092 to Maiden Bradley. Venue located between The Bradley Hare and All Saints Church, set back from the road. Limited parking at rear. ///hedgehog.relative sharpen

**Tonia Gunstone**  
 Painting / collage

A collection of abstract and semi-abstract paintings and collages, which explore the idea of wilderness and our connection to place, inspired by the south coast of Iceland.

T: 07818 094313 | [www.toniagunstone.com](http://www.toniagunstone.com)  
[instagram.com/toniagunstone](https://www.instagram.com/toniagunstone)

46

**The Bradley Four**

A group of four artists working in an intriguing mix of photography, pastels, wire, sculpture, felt, painting, collage, mixed media and bronze.

Maiden Bradley Memorial Hall,  
 High Street, Maiden Bradley. BA12 7JG

Take B3092 into village, turn into High St, sign-posted Warminster. Hall is 50m from junction. Plenty of parking. ///embellish.lived.situates

**Steve Gunter**  
 Photography

A collection of my own original landscape and wildlife photographic images from all around the British Isles.

T: 07850 102828

[www.imagesbystevegunter.co.uk](http://www.imagesbystevegunter.co.uk)



+ refreshments at weekends  
and bank holidays

The Bradley Four continues overleaf...



Tonia Gunstone



Steve Gunter



46 *continued...*

## Gillian Flint

Pastel painting

Land and seascape paintings in pastels. Local and further afield views.

T: 07538 405135 | E: gillyflint@gmail.com  
instagram.com/gillyflint

## Helena Marsden

Pastels / felt painting / figurines

Intriguing collection of pastel and felt paintings of landscapes, flowers and animals as well as 'felt figurines' inspired by beauty in nature.

T: 07884 388334 | www.pastel-pics.co.uk  
E: helkky.marsden@gmail.com



Gillian Flint



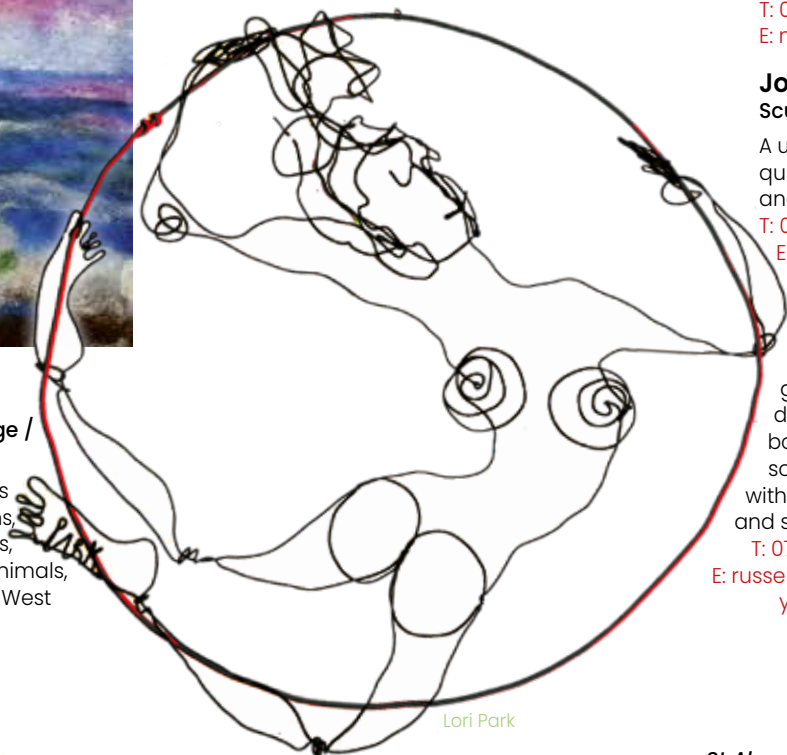
Helena Marsden

## Lori Park

Sculpture / painting / drawing / collage / mixed media

Lori works in many materials: sculptures in bronze, wire, found objects, suspensions, collage, assemblage, paintings, drawings, cyanotypes, sheet copper, depicting animals, human subjects, many inspired by the West Country, travels, and world events.

T: 07912 116926 | www.loriparkart.com  
E: newpark333@yahoo.com  
facebook.com: search 'Lori Park Art'  
instagram.com/loriparkart



Lori Park

47  
A

## St Algars Yard

Ceramics, painting, printmaking, woodcraft, knitwear, metal sculpture and glass on show in St Algars Yard workshops and beautiful barn gallery.

St Algars Yard,  
West Woodlands. BA11 5ER

On the B3092, Mere to Frome road,  
2 miles north of Maiden Bradley.

Parking in farm courtyard  
///workshops.crank.slams



Slight step on door.  
Level pathway

Preview evening:

Fri 28 April, 6- 9pm. All welcome

## Amanda Bennett

Painting

An eclectic collection of atmospheric paintings inspired by colours in the landscape.

T: 07907 824719  
E: mandabenn26@gmail.com

## John Bennett

Sculpture

A unique and varied collection of quirky fauna sculptures in scrap metal and wood.

T: 07739 626694  
E: jb260@btinternet.com

## Russell Coates

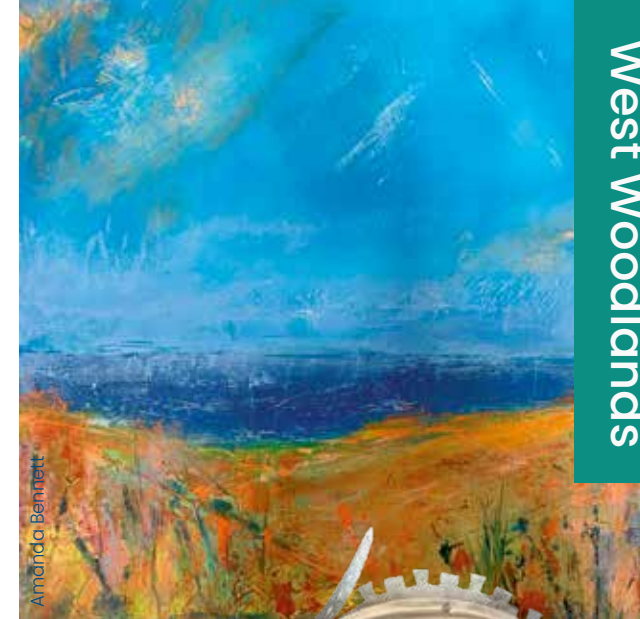
Ceramics

Hand-painted under-glaze blue porcelain dishes, plates, vases, boxes, jugs & mugs, some enamelled, with birds, animals and sea creatures.

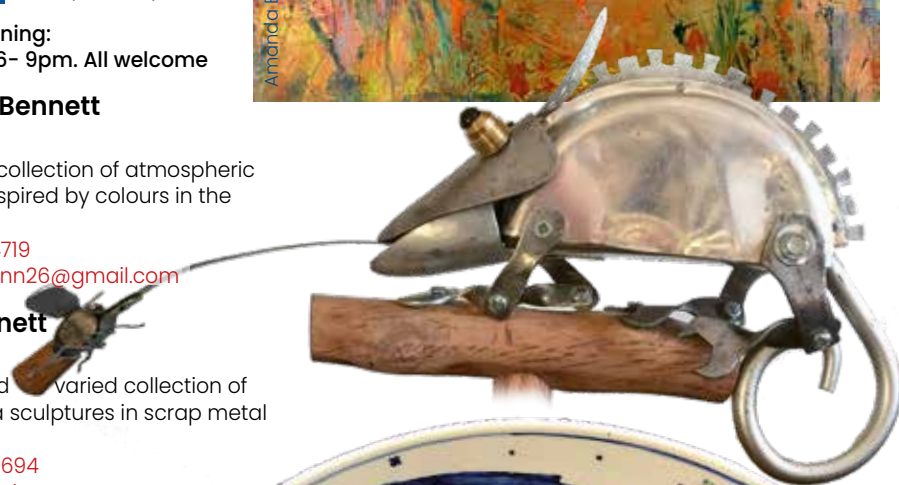
T: 07745 477135  
E: russell.coates@yahoo.co.uk

St Algars Yard

*continues overleaf...*



Amanda Bennett





**Mary Henderson**

Textile art / knitting

Colourful designs based on the knitting traditions of Shetland and Fair Isles: berets, wrist warmers, cowls and shawls.

T: 07772 176794

E: [mgladhillhenderson@gmail.com](mailto:mgladhillhenderson@gmail.com)[instagram.com/maryhendersonknitting](https://www.instagram.com/maryhendersonknitting)

I am available to answer knitting related queries: techniques and pattern interpretation. Knit and Natter sessions in the afternoons

**Sonja Klingler**

Glass

An exhibition of designed and blown glassware produced on site.

T: 07837 733461

[www.sonjaklingler.com](http://www.sonjaklingler.com)[instagram.com/sonjaklinglerglass](https://www.instagram.com/sonjaklinglerglass)**Stoney Parsons**

Painting

Ex-stained glass artist now a painter. Inspired by colour and nature. Semi-abstract landscapes combining the exterior and interior world.

**NB: Stoney Parsons' exhibition will be open 10am – 4pm each day + closed on Sat 6 May**

T: 01985 844088

[www.stoneyparsons.co.uk](http://www.stoneyparsons.co.uk)[facebook.com/stoney.parsons](https://www.facebook.com/stoney.parsons)[twitter.com/StoneyParsons](https://twitter.com/StoneyParsons)[instagram.com/stoneyparsons](https://www.instagram.com/stoneyparsons)

Painting courses for adults  
eg 'Towards Abstraction'



Stoney Parsons

**Liza Saunders**

Printmaking / textiles / cards

A bold and colourful collection of contemporary silkscreen prints, cards and textiles, comprising still lives and work inspired by nature.

T: 07908 419210

E: [lizasaunders570@gmail.com](mailto:lizasaunders570@gmail.com)[instagram.com/liza.saunders](https://www.instagram.com/liza.saunders)**Hiro Takahashi**

Ceramics

Inspired by the natural world. Rich texture, narrative and spiritual sculpture and intricate design in functional ware.

T: 07803 732510

[www.hirotakahashi.co.uk](http://www.hirotakahashi.co.uk)**Trevor West**

Woodcraft

Handcrafted boxes, jewellery, pens and other small useful items, mainly from polished hardwoods.

T: 07508 634387

E: [trevor.r.west5@gmail.com](mailto:trevor.r.west5@gmail.com)

St Algars Yard  
continues overleaf...



Liza Saunders

Hiro Takahashi

Trevor West

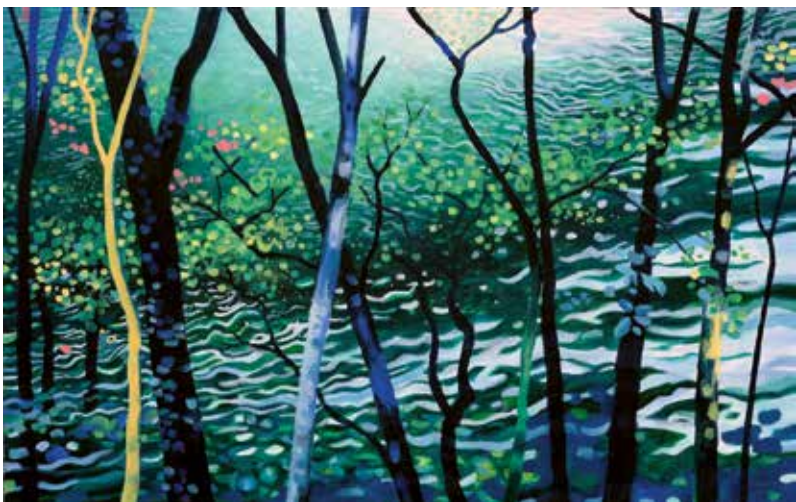


47 *continued...*

## Jim Whitty Painting

Paintings that search for the spirit and ever changing qualities of water, trees, and the landscape around us.

T: 07748 511851  
www.jimwhitty.com  
instagram.com/  
jimwhitty\_artist



47 *B*

## Frome Printmakers

An open access printmaking studio offering facilities for etching, lithography, relief processes & alternative photography. Beautiful rural location.

Liz Schubart Viv Meadows  
Sophie Pearson Hebe George  
Hannah Cantellow Charlotte Moore  
Jen Chow Steve Clarkson  
Sue Cook

T: 07816 924357  
www.fromeprintmakers.com

St Algars Farm, West Woodlands, Frome. BA11 5ER

Directions: As for 47A



**Tell me a Picture** is a course for children (ages 8 – 12) to create images from texts. Sat 29 April, 11am – 2pm.

Tutor: Hebe George. £15 per child.  
Phone 07990 558754 to book.

**Workshop in Woodcut print** techniques with Hannah Cantellow, Fri 28 Apr, 11am – 3pm: £45 per person. Phone 07739 793415 to book.



A wide variety of printmaking and alternative photography techniques; etching, lithography, relief (lino and woodcut), cyanotypes, gum bichromates, gumoil, letterpress.



OPENING VARIATIONS: Open till 4pm each day



48

## Deverill Valley Art Group

Affordable original paintings, framed and unframed, in a variety of media.

Pauline Colman	Rosemary Knott	Hilary McFarland
Jenny de Sausmarez	Charles Lane	Isobel Naughton
Mary Hickling	Pamela Lea	Norma Payne
	Marianne Marrs	Lorna Thomas

T: 07725 404665  
E: hilarymcfarland@talktalk.net

Upper Deverills Village Hall, Kingston Deverill, Warminster. BA12 7HG

Take B3095 Mere – Deverills road. Village Hall is next to the cricket ground, sharp turn through gateway.

///organisms.nanny.painted



OPENING VARIATIONS: Closed Sun 7 & Mon 8 May



## 49 Bridget Beattie Painting / drawing

**People, Places and Things –**  
Paintings in all media and  
drawings in charcoal, pencil  
and ink: landscapes, including  
local scenery, animals and  
wildlife, abstract art and still life.  
[www.bridgetbeattie.com](http://www.bridgetbeattie.com)

## Crispian Beattie Paintings

Local downland and  
seascapes in acrylic and oil.

Monkton House, Monkton Deverill,  
Warminster, BA12 7EX | T: 01985 844884

On Hindon Road T-junction at south-east  
of Monkton Deverill. Please park on road –  
disabled spaces in yard. [///tiny.gems.canny](http://tiny.gems.canny)



Gravel yard for disabled parking use.  
Low single step access into garden



Delicious homemade soup with fresh  
rolls, tea, coffee & cakes, in beautiful  
spring garden with ducks & chickens



Drawing and painting demonstrations  
provided on request



'Paint4Fun' – painting for beginners  
and drawing group

OPENING VARIATIONS: Closed Sat 6, Sun 7,  
Mon 8 May



Bridget Beattie

50

## Cath Bloomfield Print / collage

A collection of  
collagraph prints and  
collage. Textured  
colourful originals.  
Using land and figures  
as inspiration.

T: 07931 826951

[www.cathbloomfield.com](http://www.cathbloomfield.com)

[instagram.com/artycath](https://www.instagram.com/artycath)



## Jennie Gilling Cyanotypes / books

Tenth trail, showing cyanotypes combining  
landscape images and maps with plant  
material; poetry in small book forms and  
delicate layered paintings.

T: 07910 922041 | [www.jenniegilling.co.uk](http://www.jenniegilling.co.uk)

[instagram.com/jenniegillingart](https://www.instagram.com/jenniegillingart)

## Jane Gibson Ceramics

Wheel-thrown porcelain or stoneware is  
altered and colourfully glazed forming  
vessels, jugs, bowls and eccentric small  
teapots with added gold lustre.

T: 01771 701558 | [www.baytreegallery.co.uk](http://www.baytreegallery.co.uk)

## Sarah Truscott Textiles

Handwoven scarves, rugs and wall-hangings  
inspired by the movement and stillness of  
graduated colour.

T: 07986 631694 | [www.sarahtruscottweaver.co.uk](http://www.sarahtruscottweaver.co.uk)

[facebook.com/sarahtruscottweaver](https://www.facebook.com/sarahtruscottweaver)

[instagram.com/sarahtruscott\\_weaver](https://www.instagram.com/sarahtruscott_weaver)

Lakeside Garden Centre, Crockerton,  
Warminster. BA12 8AP | T: 01985 217413

Situated off the A350 at Crockerton Shopping  
Centre, at far end of car park. Exhibition in  
separate marquee through the main entrance.  
[///appealing.hides.overture](http://appealing.hides.overture)

The exhibition marquee has been generously  
sponsored by Lakeside Garden Centre



Lunches

OPENING VARIATIONS: Closes 4pm both Sundays



Jennie Gilling



Jane Gibson



Sarah Truscott



## Bull Mill Arts

Artists and craftspeople living and working at Bull Mill are opening their studios and workshops to show a wide range of contemporary art, including painting, drawing, sculpture, jewellery and printmaking.

Bull Mill Arts, Bull Lane,  
Crockerton, Warminster. BA12 8AY

A350, 1½ miles south of  
Warminster, turn onto The  
Green then follow Bull Lane  
down the hill.

///connector.cotton.sides



Not all studios  
wheelchair accessible



+ cakes!

## Nick Andrew

### Painting / drawing

Contemporary colourist painting based on  
nearby river, meadow and forest landscape.  
Also rural and urban drawing projects.



Art mentoring,  
please enquire

## Tanya Hinton

### Painting

Unique and unusual paintings  
of wildlife in oil on reclaimed  
wood.

T: 07713 277083

[www.tanyahinton.co.uk](http://www.tanyahinton.co.uk)

[facebook.com/tanyahintonart](https://facebook.com/tanyahintonart)

[instagram.com/tanyahintonart](https://instagram.com/tanyahintonart)

Bull Mill Studio + the cARTshed



1 step.  
Ramp available



Nick Andrew

T: 07730 400784 | [www.nickandrew.co.uk](http://www.nickandrew.co.uk)  
[www.nickandrewdrawingprojects.wordpress.com](http://www.nickandrewdrawingprojects.wordpress.com)  
[facebook.com/nickandrewart](https://facebook.com/nickandrewart)  
[instagram.com/nickandrewart](https://instagram.com/nickandrewart)



Tanya Hinton

Bull Mill Arts  
continues overleaf...

## Sally Alexander

### Gilding / drawing / mixed media

A collection of art works & interior  
decoration, inspired and evolved  
from nature's pollinators.

[www.sallyalexandergilding.co.uk](http://www.sallyalexandergilding.co.uk)

Studio 1, The Old Pottery, Bull Mill



Steep steps

## Olivia Clifton-Bligh

### Sculpture / printmaking

Limited edition bronze sculpture:  
hand burnished and illuminated  
linocut prints: work-in-progress  
inspired by medicinal plants.

T: 07572 591902

[www.oliviacliftonbligh.com](http://www.oliviacliftonbligh.com)

[instagram.com/oliviacliftonbligh](https://instagram.com/oliviacliftonbligh)

The Old Pottery, Bull Mill



1 small step



Sculpture and linocut  
printmaking,  
please enquire



Sally Alexander



Olivia Clifton-Bligh



51 continued...

### Stephanie Gilbert Jewellery

Individual designs in precious metals- special and unusual orders welcomed. 40 years' experience.

T: 01985 211648 | 07980 095081  
E: stephgilbert04@gmail.com

Studio 1, Bull Mill



Stephanie Gilbert



Philip Leever

### Philip Leever Painting

Mixed media paintings and collages, referring to the Cornish coast and local woodland.

T: 01985 216780

[www.philipleeversart.wordpress.com](http://www.philipleeversart.wordpress.com)

### Joanna Sims Painting / drawing

Paintings in oil, mixed media and pastel reflecting the local downland landscape and cliffs / seascapes of Penwith. Also life studies in pastel.

T: 07933 038977

[www.joannasims.co.uk](http://www.joannasims.co.uk)

[instagram.com/joannasims54](https://www.instagram.com/joannasims54)

Studio 3, Bull Mill



Outside staircase  
with two landings



Joanna Sims



Emma Lynham

### 52 Emma Lynham Drawing / painting

Recent work: drawings in graphite and colour, oil paintings, giclee prints and cards focused on local natural history, botanical and etymological portraiture.

T: 01373 832856 | E: [emmalynham@gmail.com](mailto:emmalynham@gmail.com)  
[instagram.com/emmalynham85](https://www.instagram.com/emmalynham85)

33 Sturford Lane, Corsley,  
Warminster. BA12 7QR

Follow A362 Warminster - Frome  
road from Picket Post roundabout  
(near Longleat) and take  
small unmarked road on left just  
after small bus shelter. Proceed  
¼ mile, venue is signposted.  
///playroom.metro.pointer



Gravel drive



+ cake and biscuits. All  
donations go to support  
the Sambhali Trust which  
helps women victims of rape  
and abuse in India.



[www.sambhali.org](http://www.sambhali.org)

### Pie Chambers Jewellery

Exciting new work using hand made  
textured silver and semi precious stones.  
Also the Indian Rooms: several rooms  
of Indian textiles.

T: 01373 832856  
[www.tots-unlimited.co.uk](http://www.tots-unlimited.co.uk)



Pie Chambers





53

### New Baginnings (Lisa Crick) Upcycled bags / accessories

I take unwanted materials and discarded leather sofas and repurpose them into a range of bags and accessories. Each one is individual and unique.

T: 07961 930867

[www.newbaginnings.co.uk](http://www.newbaginnings.co.uk)

[facebook.com/dontbinitbagit](https://facebook.com/dontbinitbagit)

[instagram.com/newbaginnings](https://instagram.com/newbaginnings)

20 The Hollow, Dilton Marsh, Westbury. BA13 4BU

The Hollow runs from Holy Trinity church in Dilton Marsh High Street to the A3098 (Frome-Westbury road). [campsites.driver.freezers](http://campsites.driver.freezers)



I teach how to make one of my shopping bags or aprons as a workshop day on a 1-to-1 basis

### 54 Lizbeth Spurgeon Painting

**A Mind's Eye View:** Paintings from imagination, inspired by nature, the colours, lines and movement of landscapes and ever-changing skies, produced with oil paint. Cards hand painted with watercolour.

T: 01373 300290 | [www.imaginationroom.artweb.com](http://www.imaginationroom.artweb.com)

[facebook.com/lizbethspurgeon](https://facebook.com/lizbethspurgeon) | [twitter.com/lizbeth33](https://twitter.com/lizbeth33) | [instagram.com/lizbeth\\_s3](https://instagram.com/lizbeth_s3)

Lavender Cottage, 115 High Street, Dilton Marsh. BA13 4DP

Heading from Westbury, Lavender Cottage is just past the church and garage.

One parking space and roadside parking. [arch.estuaries.swerving](http://arch.estuaries.swerving)

OPENING VARIATIONS: Closing at 2pm on Mon 8 May



Slight step



Lizbeth Spurgeon

55

### Suzie Beauvoisin Painting

**Art in the Garden:** paintings which seek romance and poetry in everyday objects. Follow the treasure trail through an intriguing garden setting.

T: 07748 235595

[www.galeriedujardin.com](http://www.galeriedujardin.com)

Studio at Church View, All Saints' Churchyard (off Market Place), Westbury. BA13 3DA

Enter Market Place from A350. Go through gateway into All Saints' Churchyard (limited parking). Church View is the cream cottage by the War Memorial.

[date.daffodils.already](http://date.daffodils.already)



Uneven surfaces in garden



Refreshments and greeting cards in aid of Victoria Garden, a nearby sunken sensory garden run by local volunteers.



Art therapy workshops for children both weekends. Details phone 01373 822949



56

### Alex Kennedy Photography

My current work concentrates on patterns created by nature, particularly the form of trees combined with the reflective, mystical qualities of water.

T: 07762 411235 | [www.atkphoto.com](http://www.atkphoto.com) | [facebook.com search 'alex kennedy atk photographer'](https://facebook.com/search/alex+kennedy+atk+photographer) [instagram.com/atkphotography\\_](https://instagram.com/atkphotography_)

Monks Cottage, 20 Westbury Road, Edington, Nr Westbury. BA13 4QE



12 steps up to exhibition area

On B3098, from Westbury direction, 2nd white cottage on left just after white railings on left, about 200m after Edington sign, 1 to 2 parking spaces. [snappy.mascots.refreshed](http://snappy.mascots.refreshed)







57

## Hilary Doria Jackson Painting

Showing the joy of vibrant colour in oil paintings, inspired by local landscapes and flowers.

T: 01985 213513

E: [hilarydoriajackson@gmail.com](mailto:hilarydoriajackson@gmail.com)

Long Meadow, 72 Victoria Road, Warminster.  
BA12 8HG

On Victoria Road (A362), about ½ mile from Warminster bypass and ¾ mile from the town centre, close to mini roundabout

/// [admire.trustees.louder](http://admire.trustees.louder)



Jonny Bainbridge

58

## Organ Inn Art Gallery Painting / mixed media / glass art

A collaboration of 5 artists exhibiting a variety of work from abstract, watercolours, wildlife, mixed media and glass art.

**Jonny Bainbridge** – Abstract paintings in oil and mixed media

**Mandy Capel** – Mixed media glass artist

**Susan King** – Wildlife and abstract artist using watercolours, acrylics & reclaimed wood

**Fiona Macdonald** – Digital print artist

**Denise Wilson** – Pop Art expressionist in mixed media.

T: 07568 574918 | [www.SukiArtGB.etsy.com](http://www.SukiArtGB.etsy.com)  
[instagram.com/theorganinnwarminster](https://www.instagram.com/theorganinnwarminster)  
[facebook.com/TheOrganInnWarminster](https://www.facebook.com/TheOrganInnWarminster)

The Organ Inn, 49 High St, Warminster. BA12 9AQ

Parking in main car park next to Morrisons supermarket. Then just a few mins walk to the venue at the western end of the High Street.

/// [accompany.festivity.crowds](http://accompany.festivity.crowds)



One flight of stairs



Lunches



Watercolour painting, fluid art on canvas, resin art (Susan King)

OPENING VARIATIONS: Mon & Tues 12 – 5pm  
Weds – Sat 12 – 8pm / Sun 12 – 6pm

59

## Jeremy Hunter Painting

A collection of landscapes inspired by an ongoing search for tranquil places and moments in time.

T: 07999 947111 | E: [hunteerz@aol.co.uk](mailto:hunteerz@aol.co.uk)

Garage No.9, Foreminster Court, Warminster.  
BA12 8DA

Turning into Fore St, 50m on right is entrance to garage area for Foreminster Court. Studio is in Garage 9 on righthand side. Parking in Fore Street. /// [blossom.relating.denim](http://blossom.relating.denim)



+ biscuits



Large format photography – using the 5 x 4 inch monorail camera



Susan King



Jeremy Hunter

## THE ORGAN INN



Light lunches, afternoon teas and evening meals.  
Beers, wines & spirits

**ART GALLERY NOW OPEN!**

49 High St, Warminster BA12 9AQ  
01985 217503

[instagram.com/theorganinnwarminster](https://www.instagram.com/theorganinnwarminster)  
[facebook.com/TheOrganInnWarminster](https://www.facebook.com/TheOrganInnWarminster)





Rachel Eardley

Turnpike Cottage, Henfords Marsh,  
Warminster: BA12 9PA

At thatch cottage on Smallbrook Rd. turn into  
Henfords Marsh. Entrance to studio is on your  
left. Limited parking ///faces.following.lovely



Uneven ground in the entrance



Homemade delights every day.  
Sat 6 May – takeaway curry.

Sun 7 & Mon 8 May – Coronation cream teas



Collage doodling – deface, make a  
face, add a comment!? Let the pen  
and your imagination flow. Creative  
table always open, suitable for all ages.

60

**Heidi Donovan**  
Painting / drawing

Land and skies inspired by our ever changing  
weather. An inspired and intuitive response  
to moments outdoors in Wiltshire's beautiful  
scenery.

T: 07500 548537

E: hadonovan44@gmail.com

**Rachel Eardley**  
Jewellery / drawing / prints / textiles

Intricate and imaginative coin jewellery,  
line drawings, prints and new one- off  
embroideries.

T: 07941 634246

[www.racheleardley.com](http://www.racheleardley.com)

[instagram.com/racheleardleysomerset](https://www.instagram.com/racheleardleysomerset)

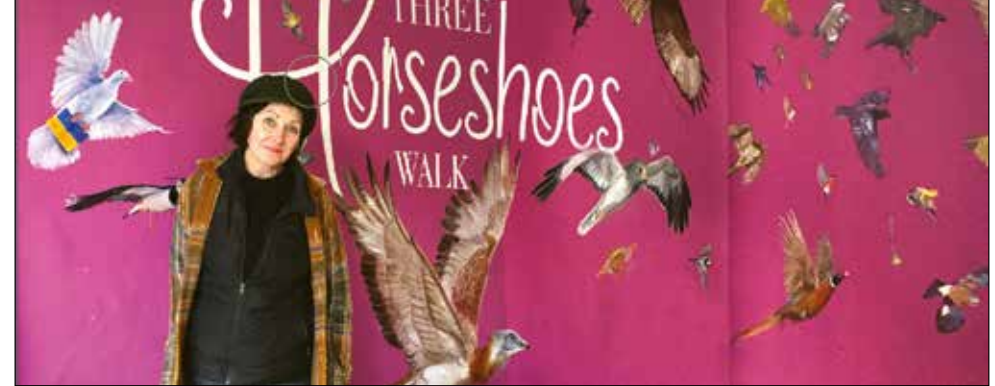
**Laura Jane**  
Children's kitchens

Repurposed, up-cycled and personalised  
kitchens for little kids. Each one is themed  
after a person dear to me, who wows me with  
their culinary skills.

T: 07521 822999

E: sendmechocolates@gmail.com

[instagram.com/nestandmoon](https://www.instagram.com/nestandmoon)



61

**Tanya Hinton**  
Street Art

**Secret Bird Art Trail.** Paintings of birds and  
wildlife on walls, shopfronts, empty shop  
hoardings all over Warminster town centre,  
created since summer 2021. Start with Tanya's  
50 bird mural at 3 Horseshoe's Walk and  
follow the trail to find lots more!

Access Tanya's bird trail map at:

[www.tanyahinton.co.uk/warminster-bird-trail](http://www.tanyahinton.co.uk/warminster-bird-trail)

T: 07713 277083 | [www.tanyahinton.co.uk](http://www.tanyahinton.co.uk)

[facebook.com](https://www.facebook.com) search:

'secret bird art of warminster'

[instagram.com/tanyahintonart](https://www.instagram.com/tanyahintonart)

3 Horseshoes Walk, Market Place,  
Warminster. BA12 9AY



In Warminster town centre, 3 Horseshoes Walk  
is 25m east of the main traffic lights.

///plank.aspect.procured

62

**Elaine Mairis**  
Tattooing (Shuttle lace)

A fascinating exhibition of tattooing- intricate  
lace woven using a small hand shuttle at  
**Yarn for the Soul**, a yarn shop with a boutique  
setting, specialising in natural fibres (venue  
unsuitable for dogs - unless assistance dogs).

T: 07548 169875 | [www.yarnforthesoul.co.uk](http://www.yarnforthesoul.co.uk)

[www.yarnforthesoul.co.uk/](http://www.yarnforthesoul.co.uk/)

[index.php/the-silver-shuttle](http://index.php/the-silver-shuttle)

[instagram.com/silvershuttletattooing](https://www.instagram.com/silvershuttletattooing)

Yarn for the Soul, 6 East St. Warminster. BA12 9BN

Beside Roland John Hairdresser, opposite the  
pedestrian crossing near Warminster Sorting  
Office. ///beams.pitching.statement



Demonstrations  
of tattooing



Shuttle  
tattooing



OPENING VARIATIONS:  
Open: 10.30am – 4.30pm



Elaine Mairis



63

**Dave Wallace**

Drawing / assemblage / photography / sound

**D'n'A Garage Gallery.** Abstract drawing, soundscapes, assemblage and photography. Debut presentation: attempting to draw threads together across different media.

T: 07767 623576

E: [davewallacebass@gmail.com](mailto:davewallacebass@gmail.com)[instagram.com/davewallace1000](https://www.instagram.com/davewallace1000)**Anjalika Baier**

Cyanotype / cyanolumen

A collection of cyanotypes and cyanolumen prints made with locally sourced botanicals and other found materials on either paper, cotton or silk.

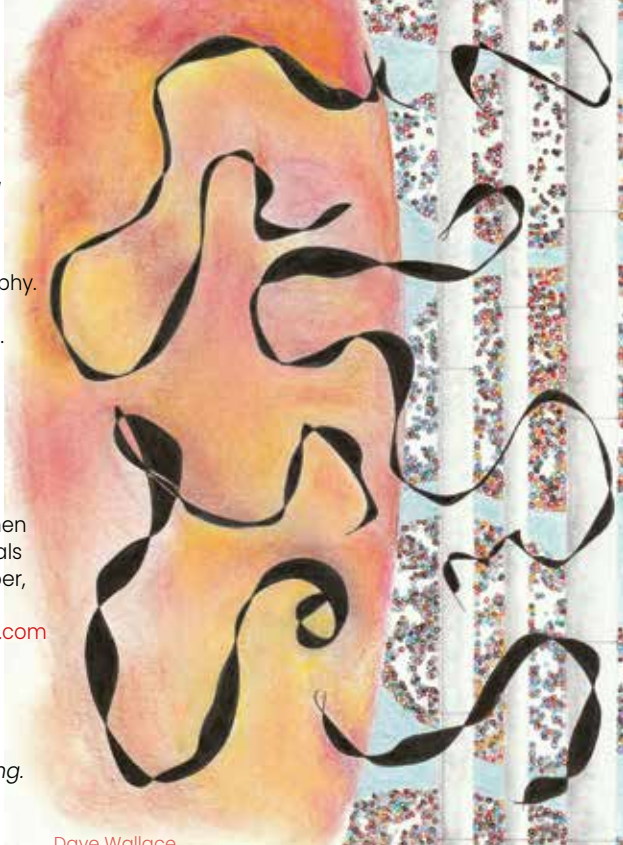
T: 07817 379443 | E: [anjalikabaier@gmail.com](mailto:anjalikabaier@gmail.com)[instagram.com/anjalikabaier](https://www.instagram.com/anjalikabaier)

120 Prestbury Drive, Warminster. BA12 9LE

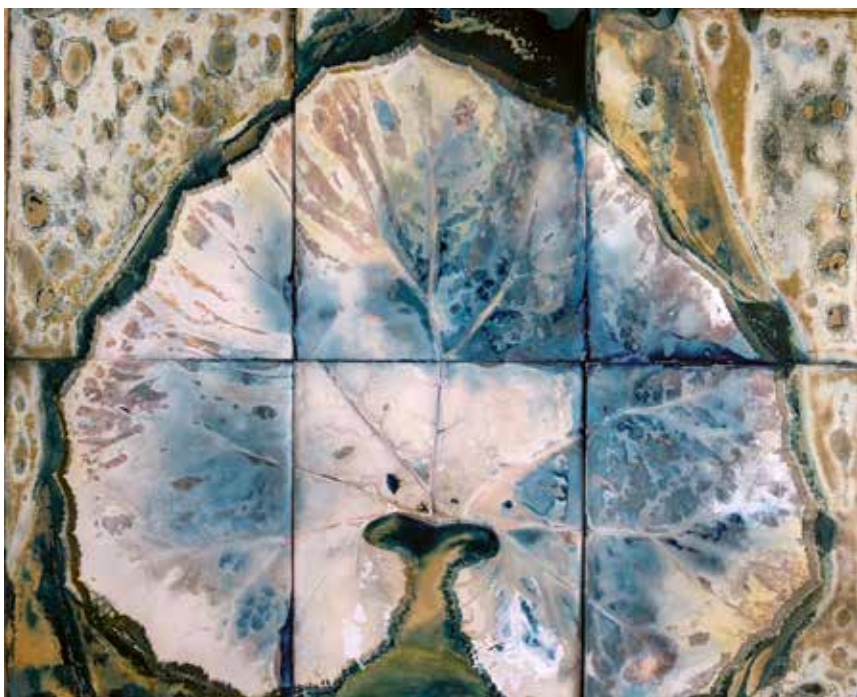
Prestbury Drive is off the Boreham Road, east of the town centre. On-street parking.

/// [cactus.glare.newspaper](http://cactus.glare.newspaper)

Narrow doorway and a couple of door sills and steps.



Dave Wallace



Anjalika Baier

64

**The Hive Artshouse**

Freya Bramble-Carter - Ceramics

Cheryl Cork - Ceramics

Anna Shuttlewood - Illustration

Heather Stone - Ceramics

T: 07718 750407

E: [TheHiveArtshouse@gmail.com](mailto:TheHiveArtshouse@gmail.com)[facebook.com/TheHiveArtshouse](https://www.facebook.com/TheHiveArtshouse)[instagram.com/thehiveartshouse](https://www.instagram.com/thehiveartshouse)

The Hive Artshouse, 93 Boreham Road, Warminster BA12 9JY

The Hive Artshouse is the Victorian building (formerly St John's Primary School), next to St John's Church and adjacent to St. John's Church Parish Hall. Please park on Boreham Road. /// [somebody.consented.prayers](http://somebody.consented.prayers)



'Alphabet Animals': Family watercolour workshop - Mon 1 May, 2 - 4 pm

**Heather Stone**

Ceramics

A collection of strong and distinctive, hand-built ceramic forms. Dynamic mark making creates movement, expression and layers of rich textures.

T: 07796 351811

E: [heatherstone3@live.com](mailto:heatherstone3@live.com)[instagram.com/heatherstone999](https://www.instagram.com/heatherstone999)

'Feldenkrais 'Awareness Through Movement'

45 min taster sessions with Heather Stone.

Tues 2 / Weds 3 May, 5-7 pm.

Well-being for artists and makers, encouraging relief, recovery and prevention of occupational discomfort or injury. All welcome.

For further information, phone Heather 07796 351811

Heather Stone



Warminster

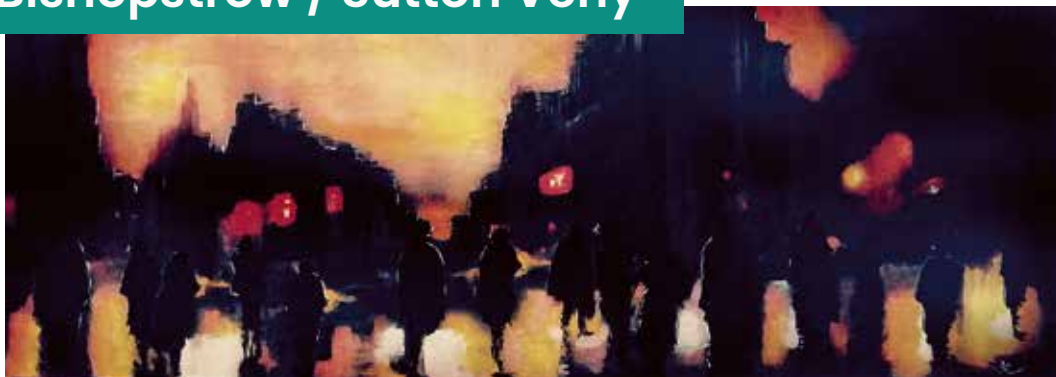


Anna Shuttlewood



# Bishopstrow / Sutton Veny

Miles Cantelou



## 65 Miles Cantelou Painting

Recent artworks varying in size include abstracted scenes, neo-classical figures and a touch of surrealism. Inspiration: life travels. The venue is a biodiversity project that borders the River Wylfe. The artwork will be displayed within the marquee.

T: 07730 070303 | [www.milescantelou.com](http://www.milescantelou.com)  
[instagram.com/milescantelouart](https://www.instagram.com/milescantelouart)

Golden Meadow (Biodiversity Project),  
9 Bishopstrow Road, Bishopstrow. BA12 9HN

Golden Meadow is a biodiversity project on  
Bishopstrow Road. (opp Bishopstrow College).  
BA12 9HQ will guide you to the entrance.

Parking on road. [lawnsinspected.warbler](https://www.lawnsinspected.warbler)

OPENING VARIATIONS: 11am – 7pm all days



Cé Ponsonby

## 66 Cé Ponsonby Painting

A thought-provoking exhibition of oil paintings  
centred around the meaning of absence.

T: 07587 497497

[www.ceponsonby.com](http://www.ceponsonby.com)

[instagram.com/ce\\_artspace](https://www.instagram.com/ce_artspace)

The Studio (accessible from Norton Road),  
111 High Street, Sutton Veny BA12 7AW

Opposite the Woolpack pub. Access through  
double gates on Norton Road. Off street  
parking. [crunchingthrillers.canoe](https://www.crunchingthrillers.canoe)



Art tutor/  
workshops

OPENING VARIATIONS:

Open every day from 10.30am – 1.30pm

# Heytesbury

67

## David O'Connor FRSA Painting / sculpture

Colourful abstracted  
landscape paintings of  
Wiltshire, and sculpture  
in a variety of media.

T: 01985 840043

[www.davidoconnor.co.uk](http://www.davidoconnor.co.uk)

[instagram.com/](https://www.instagram.com/davidoconnorart)

[davidoconnorart](https://www.instagram.com/davidoconnorart)

53 High Street, Heytesbury,  
Warminster. BA12 0EB

On Heytesbury High Street  
opposite the post office.

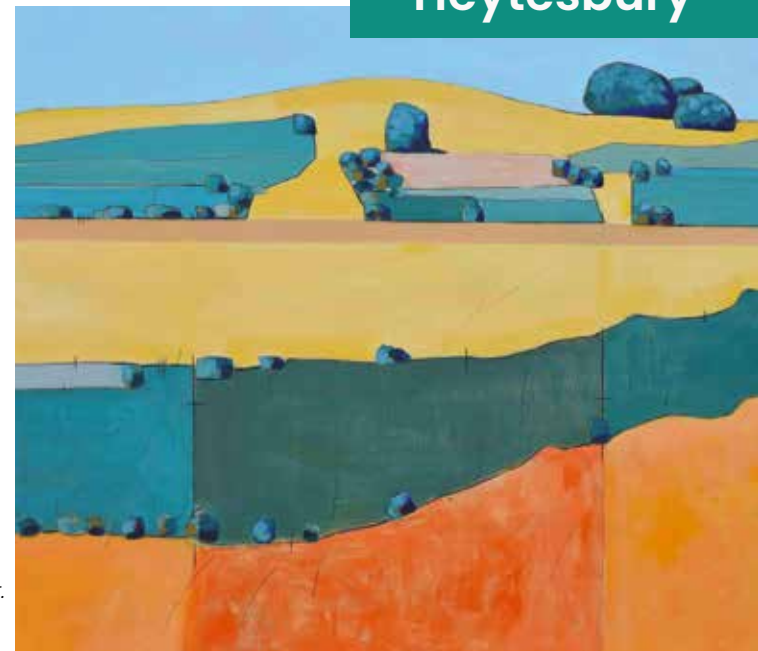
Follow the signs to the  
studio at rear of house.

Easy to park on High Street.

[found.mend.famous](https://www.found.mend.famous)



Gravel path:  
unsuitable for  
wheelchairs



68

## Sally Thomson Painting

Paintings in various media,  
mainly of landscape or  
natural subjects.

T: 07549 002926

E: [thomsoncodford@gmail.com](mailto:thomsoncodford@gmail.com)

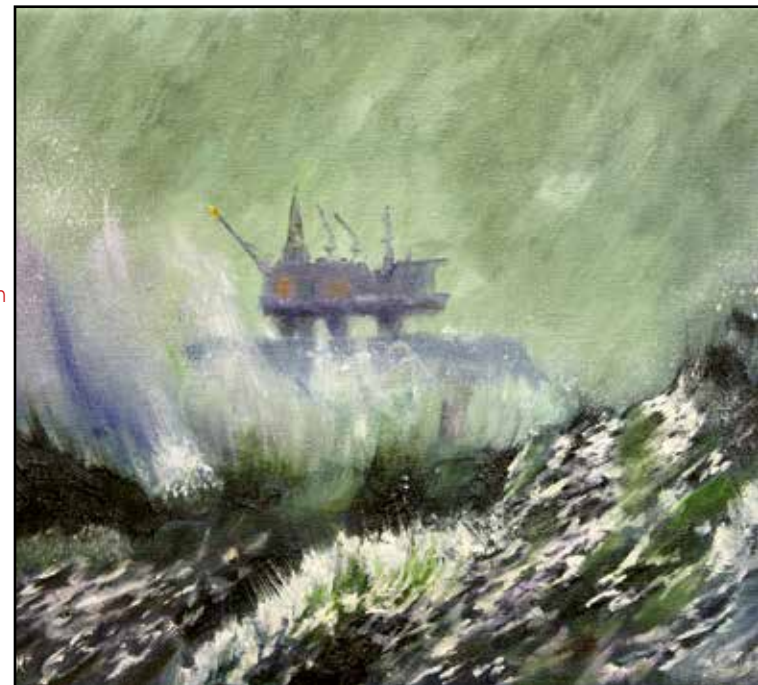
The Red Lion, High Street,  
Heytesbury, BA12 0EA

The Red Lion is close to  
the church in the centre  
of Heytesbury. Plenty of  
parking.

[dame.producing.strongly](https://www.dame.producing.strongly)



Lunches



OPENING VARIATIONS:

Tue– Fri: 12– 3pm; 6– 11pm / Sat: 12– 11pm / Sun: 12– 6pm / Mon closed



69

**Emma Abel of Abelmosaics****Mosaics**

Fine art mosaics, focussing on critically endangered wildlife, using glass, marble, ceramic and slate, cut with precision.

T: 07411 107916 | [www.abelmosaics.com](http://www.abelmosaics.com)

[facebook.com/abelmosaics](https://facebook.com/abelmosaics) | [instagram.com/abelmosaics](https://instagram.com/abelmosaics)

The Grange, Chitterne, Warminster. BA12 0LG

Grey House to left of All Saints Church. Green Gates opposite 30mph sign, parking in drive.

///rescuer.dragonfly.storyline



+ cake



Mosaics



70

**The Ginger Piggery**

A collective of creative businesses set in the heart of the Wyllye Valley.

[www.facebook.com/thegingerpiggery](https://www.facebook.com/thegingerpiggery)

Thegingerpiggery

The Ginger Piggery, Boyton. BA12 0SS

A36, turn off signposted Boyton, follow the road to T-junction turn right, then next right into Ginger Piggery, good car parking.

///only.snuggle.whisker



Ginny's Cafe for lunches and refreshments, open every day.

[facebook.com/ginnyboyton](https://facebook.com/ginnyboyton)

**Karen Welsh****Painting**

An exhibition of modern landscape paintings celebrating colour and form. View larger works close-up to see the layering, textures and techniques used.

T: 07515 482406

[www.karenwelshartist.co.uk](http://www.karenwelshartist.co.uk)

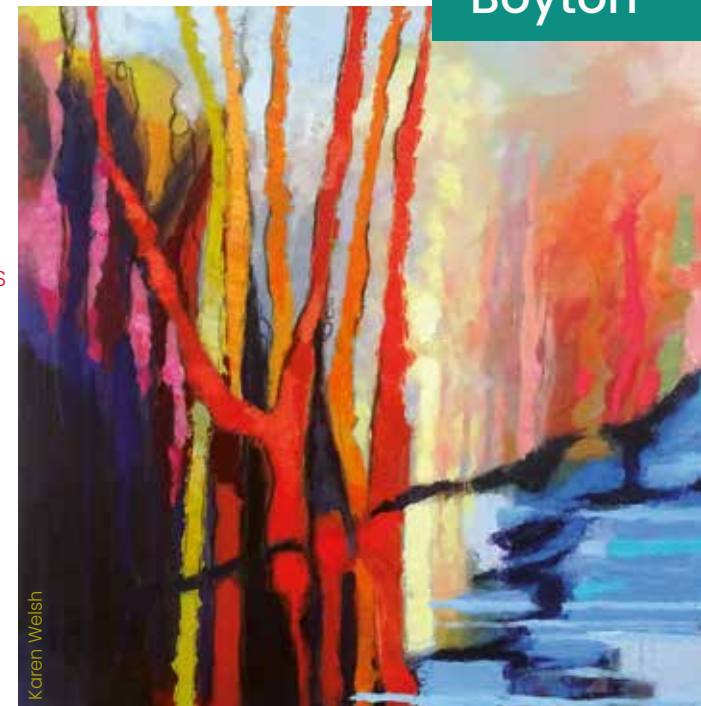
[facebook.com/KarenWelshArtist](https://facebook.com/KarenWelshArtist)

[instagram.com/karenwelshartist](https://instagram.com/karenwelshartist)

Thatched Barn, The Ginger Piggery



Landscape painting in acrylics



Karen Welsh

**Pily Batt****Painting / china painting**

A range of modern abstract oil on canvas, some traditional fine art and painting on porcelain using techniques as seen in the Potteries.

T: 07462 282182

E: [pilybatt@live.co.uk](mailto:pilybatt@live.co.uk)

Studio 5, The Ginger Piggery

*The Ginger Piggery continues overleaf...*



Pily Batt

Warminster  
Web

"Mike is a GOD amongst web designers"

Tanya Hinton

"The experience of working with Mike was a pleasure from beginning to end"

David O'Connor FRSA

"I would recommend his web services to other small businesses like mine"

Catherine Beale

"Really professional, efficient and more than willing to listen to ideas!"

Nick Andrew

WarminsterWeb.co.uk

[info@warminsterweb.co.uk](mailto:info@warminsterweb.co.uk)

07881 913387





Vicky Whelpton

70 *continued...*

**Rob Whelpton**  
Ceramics

Raku fired pots and sculptures.

**Vicky Whelpton**  
Ceramics

A collection of new pots, with seasonal decoration.

T: 07727 297747

[www.whelptonceramics.co.uk](http://www.whelptonceramics.co.uk)

[instagram.com/whelptonceramics](https://www.instagram.com/whelptonceramics)

Unit 2, The Ginger Piggery



Pottery classes, hand building and throwing.



Rob Whelpton



71

**Vicky Palmer**  
Painting

Award winning artist with the Society of Women Artists (SWA), Vicky is known for her contemporary portraits and animal paintings including the vibrant South West foxhound packs.

T: 07783 510949 | [www.vickypalmer.co.uk](http://www.vickypalmer.co.uk)

[facebook.com/artist.vickypalmer](https://www.facebook.com/artist.vickypalmer) | [instagram.com/vickypalmerartist](https://www.instagram.com/vickypalmerartist)

Foggins Cottage, 2 Sherrington, Warminster. BA12 0SN

Sherrington is a tiny loop of a village, you will see the signs either as you come in or exit the village. ///mailers.pickles.ally

OPENING VARIATIONS: Opening at 11.30am both Saturdays. Closing at 4.30pm every day and 3.30pm both Sundays.

**GINNY'S**



EXTENDED OPENING HOURS: 10AM - 5PM  
DURING THE  
**WYLYE VALLEY ART TRAIL**  
(NORMAL OPENING TIMES: 10AM - 2PM. MONDAY - SUNDAY)

Ginger Piggery, Boyton. BA12 0SS Tel: 01985 850381 [www.facebook.com/ginnysboyton](https://www.facebook.com/ginnysboyton)





## 72 Parastoo Ganjei Painting

An exciting collection of recent paintings inspired by the beauty of roses and local landscapes in the heart of the inspirational Wylfe Valley.

T: 07828 179040 | [www.parastooganjei.com](http://www.parastooganjei.com)

[facebook.com/parastooganjei](https://facebook.com/parastooganjei) | [instagram.com/parastoo\\_ganjei\\_artist](https://instagram.com/parastoo_ganjei_artist)

Unit 5, Oakley Business Park, Dinton Road, Wylfe, Salisbury. SP3 5EU

Take A36 towards Wylfe Village, drive along Dinton Road for about 2 miles. The Oakley Business Park is on the right. Unit 5 Parking opposite studio. [///printing.showcases.relax](http://printing.showcases.relax)



SALISBURY  
ARTSSCENE



ART  
in the  
SQUARE

1st Sunday of the month  
MARCH - DECEMBER  
10 - 4

[SALISBURYARTSSCENE.CO.UK](http://SALISBURYARTSSCENE.CO.UK)

Sally Edwards



73

## Salisbury Arts Scene

A colourful, eclectic display of original contemporary art from Salisbury artists in the beautiful setting of Langford Lakes. The style of each artist can be seen on our website page via the link below.

Vicky Bilton - Textiles

Marja Brown - Acrylics

Fiona Charter - Ceramics

Sally Edwards - Photography

Sarah Foat - Acrylics

Annie George - Acrylics

Rachel Gray - Ceramics

Sarah Hobley - Sculpture

Mia Houghton - Jewellery

Philippa Lavers - Pastels

Chris Lock - Photography

Zac Newham - Wood mosaic

Moria Ross - Stone carving

George Shapland - Woodturning

Roger Stephens - Sculpture

Annaliese Stoney - Mixed media

Debra Sweeney - Mixed media

Barbora Vlckova - Mixed media

Philippa Lavers



T: 07870 495225 | [www.salisburyartsscene.co.uk/exhibitions/wvat-2023](http://www.salisburyartsscene.co.uk/exhibitions/wvat-2023)  
[instagram.com/salisburyartsscene](https://instagram.com/salisburyartsscene)

Langford Lakes Nature Reserve, Duck Street, Steeple Langford. SP3 4NH

Turn off the A36 Salisbury to Warminster road to Steeple Langford and turn into Duck Street. Nature reserve entrance is on left once you cross the bridge. Ample parking. Cycle racks. Dogs not allowed on the reserve. [///bunny.bagels.roadways](http://bunny.bagels.roadways)



Kingfisher Café: lunches, refreshments and homemade cakes.  
Café open 10 - 4 / 29 April - 7 May

OPENING VARIATIONS: Open 10am - 5pm daily



# ARTIST INDEX – by venue number

## Painting • Drawing • Illustration

Sally Alexander 51  
David Allfrey 21  
Lyndi d'Ambrumenil 41  
Nick Andrew 51  
Lynda Appleby 22

Jonny Bainbridge 58  
Greg Bastin 9  
Pily Batt 70  
Bridget Beattie 49  
Crispian Beattie 49  
Catherine Beale 29  
Suzie Beauvoisin 55  
Amanda Bennett 47a  
Cherida Birch 12  
Gerald Blundell 18  
Marja Brown 73  
Ursula Madeleine Buston 18

Miles Cantelou 65  
Chloe Cardozo 26  
David Carpenter 25  
Anna Cecil 17  
Arabella Chapman 2  
Henrietta Charteris 17  
Pauline Colman 48  
Anthony Connolly 26  
Pamela Coward 38  
Emma Cowley 21  
Katy Crabbe 27

Laura Dalton 17  
Alexandra Davies 31  
Penelope Daw 18  
Henrietta De Ritter 35  
Jenny de Sausmarez 11b / 48  
Deverill Valley Art Group 48  
Michael Dillon 23  
Heidi Donovan 60

Rachel Eardley 60  
Anna Mabella Edgley 18  
Christopher Edwick 13  
Rose Eva 2

Tessa Farrington 37  
Fern Cottage Art Group 9  
Gilly Flint 46  
Sadie Flower 21  
Sarah Flux 22  
Sarah Foat 73  
Hannah Fowler 17

Parastoo Ganjei 72  
Annie George 73  
Nick Gorman 17  
Tonia Gunstone 44

Julia Haes 5  
Mary Hickling 48  
Philippa Hicks 41  
Meghan Hill 9  
Tanya Hinton 51 / 61  
Tom Hoar 26  
Bella Hoare 43  
Skye Holland 17  
Sally Hughes 9  
Jeremy Hunter 59

Hilary Doria Jackson 57

Lynn Keddie 11b  
Lindsay Keir 3  
Susan King 58  
Rosemary Knott 47b

Moira Ladd 10  
Charles Lane 48  
Philippa Lavers 73  
Pamela Lea 48  
Shelagh Leakey 35  
Ernest Lee 21  
Philip Leever 51  
Susanna Lisle 45  
Tanya Lole 9  
Patricia Low 18  
Emma Lynham 52

Paul MacDermot 26  
Marianne Marrs 48  
Helena Marsden 46  
Hilary McFarland 48  
Christianna Mitchell 30  
Johnny Morant 8  
Val Morsman 28  
Keith Musgrove 21  
Mark Muspratt Williams 5

Isobel Naughton 48

David O'Connor 67  
Organ Inn Art Gallery 58  
Robert O'Rorke 11a

Vicky Palmer 71  
Lori Park 46  
Eliza Parker 42  
Stoney Parsons 47a  
Norma Payne 48  
Sue Phipps 31  
Laurence Pollard 22  
Cé Ponsonby 66  
Lucy Portman 26  
Susan Poulton 18  
Frances Prosser 21

Barb Ralph 40  
Evie Rich 32  
Laura Rich 32  
Ali Russell 25

Rachel Sargent 24  
Lynne Savege 21  
Tim Scott Bolton 26  
Amy Shuckburgh 17  
Anna Shuttlewood 64  
Joanna Sims 51  
Jane Alyson Smart 11b  
Lizbeth Spurgeon 54  
Vivien Stratton 25  
Studio90 5  
Yve Sturgeon 11b  
Summerleaze Gallery 26  
Debra Sweeney 73

Lorna Thomas 48  
Sally Thomson 68  
Helen Thorp 11a  
Christopher Topham 31

Sue Vezey 5

Dave Wallace 63  
Karen Welsh 70  
Jim Whitty 47a  
Denise Wilson 58

## Sculpture • Metalwork • Stone

Greg Bastin 9  
John Bennett 47a  
Roger Braddock 1  
Pene Cairns 17  
Olivia Clifton-Bligh 51  
Mark Coreth 26  
Pauline Dawkins 22  
Mark Dunham 34  
Rose Eva 2  
Kate Good 15  
Gray's Stone Carving Studio 1

Henry Gray 1  
Tamsin Gray 1  
Ian Hamilton 27  
MC Hamilton 1  
Dean Harris 1  
Sarah Hobley 73  
Peter Hughes 1  
Amy Lancaster 18  
Angus Mann 1  
Emma Mauger 33  
Keith Musgrove 21

David O'Connor 67  
Lori Park 46  
Rich Twisted Arc 1  
Will Richardson 3  
June Ridgway 21  
Moira Ross 1 / 73  
Frank Snook 21  
Yvonne Steer 3  
Roger Stephens 63  
Yve Sturgeon 11b  
Susan Trigger 1

## Printmaking • Mixed Media • Collage • Artist's Books

Sally Alexander 51  
Anjalika Baier 63  
Cath Bloomfield 50  
Ursula Madeleine Buston 18  
Hannah Cantellow 47b  
Jen Chow 47b  
Steve Clarkson 47b  
Olivia Clifton-Bligh 51  
Sue Cook 47b  
Pamela Coward 38  
Elizabeth M Coyle-Camp 14  
Rachel Eardley 60  
Frome Printmakers 47b

Hebe George 47b  
Jennie Gilling 50  
Tonia Gunstone 44  
Jo Jon 9  
Shelagh Leakey 35  
Patricia Low 18  
Fiona MacDonald 58  
Viv Meadows 47b  
Christianna Mitchell 30  
Charlotte Moore 47b  
Organ Inn Art Gallery 58  
Lori Park 46  
Sophie Pearson 47b

Pre-Loved Art 17  
Susan Poulton 18  
Rebecca Rymer 19  
Rachel Sargent 24  
Liza Saunders 47a  
Liz Schubart 47b  
Annaliese Stoney 73  
Debra Sweeney 73  
Barbora Vickova 73  
Wardour School  
Children 17  
Denise Wilson 58

## Ceramics • Mosaics

Emma Abel 69  
Plaxy Arthur 3  
Julie Ayton 7  
Jacqueline Baker 18  
Pily Batt 70  
Alan Booth 5  
Freya Bramble-Carter 64  
Madeleine Cardozo 37

Fiona Charter 73  
Russell Coates 47a  
Cheryl Cork 64  
Jane Gibson 50  
Kate Good 15  
Rachel Gray 73  
Patricia Low 18  
Emma Mauger 33

Joanne Rutter 22  
Heather Stone 64  
Vivien Stratton 25  
Yve Sturgeon 11b  
Hiro Takahashi 47a  
Ursula Waechter 11b  
Rob Whelpton 70  
Vicky Whelpton 70

## Textiles • Leather

Angela Ambrose 39  
Vicky Bilton 73  
Bound by Stitch 39  
Lisa Crick 53  
Julia Desch 22  
Rachel Eardley 60  
Jane Hayward 39  
Mary Henderson 47a

Ali Holloway 6  
Jo Jon 9  
Roz Legge 10  
Elaine Mairis 62  
Helena Marsden 46  
Anna McDowell 22  
New Baginnings 53  
Jane Ponsford 6

Karen Prin 41  
Catarina Riccabona 6  
Liza Saunders 47a  
Jennifer Stokes 39  
Sarah Truscott 50  
Rosemary Westlake 39  
Wink Gallery 6



## Furniture Wood • Gilding

Sally Alexander 51  
Robert Baker 18  
Matt Belfrage 11b  
Matthew Burt 6 / 7  
Julie Byngam 11b  
Mark Dunham 34  
Jason Fermor 10  
Laura Jane 60  
Zac Newham 73  
Rebecca Rymer 19  
George Shapland 73  
Martyn Simpson 4  
Trevor West 47a  
Rupert Williamson 11b

## Recycled Art Street Art

John Bennett 47a  
Lisa Crick 53  
Jason Fermor 10  
Tanya Hinton 51 / 61  
Sally Hughes 9  
Laura Jane 60  
Susan King 58  
New Baginnings 53

## Photography Film • Digital

Debora Barnes 44  
Madeleine Cardozo 37  
Elizabeth M Coyle-Camp 14  
Su Cuff 5  
Sally Edwards 73  
Steve Gunter 46  
Steve Hawkins 36  
Alex Kennedy 56  
Chris Lock 73  
Fiona MacDonald 58  
Jonty Sale 20  
Dave Wallace 63  
Rupert Williamson 11b

## Jewellery

Serena Barnes 18  
Pie Chambers 52  
Rachel Eardley 60  
Stephanie Gilbert 51  
Mia Houghton 73  
Ladytree Designs 16  
Ann Oldfield 11b  
Rachel Raine 3

## Glass Stained Glass

Ruth Dresman 7  
Mandy Capel 58  
Sonja Klingler 47a  
Gillian McCormick 3  
Geraldine McLoughlin 18  
Organ Inn Art Gallery 58  
Rebecca Rymer 19  
Claire Waters 10

## Installation Sound

Elizabeth M Coyle-Camp 14  
Sandie Flower 21  
Dave Wallace 63



**After the Wylve Valley Art Trail** Many of the artists and craftspeople listed in this guide welcome visitors to their studios throughout the year (*it is advisable to phone or email beforehand to check*).

**The next Wylve Valley Art Trail** will take place in May 2025. If you are an artist, maker, craftspeople, gallery or art group interested in taking part, please email: [info@wvat.co.uk](mailto:info@wvat.co.uk).

**The Team** Wylve Valley Art Trail is a non-profit organisation, funded entirely by the participating artists, groups and galleries. It is organised by a team of volunteers:

Co-ordinator / guide design: **Nick Andrew**

Listings: **Celia Burt**

Publicity: **Rose Eva**

Image formatting: **Chris Lock**

Secretary / Royal presentation co-ordinator: **Jennie Gilling**

Social Media: **Tonia Gunstone, Steve Hawkins**

**Acknowledgements** The organising team and participants of the Wylve Valley Art Trail would like to thank:

**Mike Palmer** at **Warminster Web** (*see advert under venue 69*) for his hard work in designing and building [www.wvat.co.uk](http://www.wvat.co.uk).

**Kevin Harrison** for creating the WVAT app (*contact Kevin at: [appsupport@macrotech.uk](mailto:appsupport@macrotech.uk)*)

**Bishops Printers** (*see advert below*) for printing this guide.

**Will Everett** at **Acoustic Distribution** (*see advert previous page*) for working so hard in getting the guide out there!

And thanks to everyone who has helped with distribution and publicity and who have contributed to the success of the **Wylve Valley Art Trail 2023**.

Contact: Wylve Valley Art Trail: T: 07730 400784 | E: [info@wvat.co.uk](mailto:info@wvat.co.uk)

**((acoustic))**  
DISTRIBUTION

We deliver any marketing material

Call Will on 07397 853006  
[acousticdistribution@btinternet.com](mailto:acousticdistribution@btinternet.com)  
[acousticdistribution.co.uk](http://acousticdistribution.co.uk)

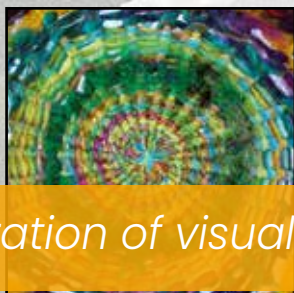
**PRINT EXPERTISE  
SINCE 1985**

We're friendly and knowledgeable.  
We're not flash or fancy, but we are  
really good at what we do.

[bishops.co.uk](http://bishops.co.uk) | [enquiries@bishops.co.uk](mailto:enquiries@bishops.co.uk)



#WVAT'23



The Queen's Award  
for Voluntary Service



[wvat.co.uk](http://wvat.co.uk)

SCULPTURE  
CERAMICS  
TEXTILES  
INSTALLATION  
GILDING  
PRINTMAKING  
RECYCLED ART  
PAINTING  
JEWELLERY  
MOSAIC  
LEATHER  
PHOTOGRAPHY  
WOOD  
ILLUSTRATION  
DIGITAL ART  
ARTIST'S BOOKS  
FURNITURE  
METALWORK  
GLASS  
MIXED MEDIA  
DRAWING

*A celebration of visual art in South West Wiltshire*